

Institutional  
Research

Fall 2019



**ALLIANCE**  
UNIVERSITY

# FACT BOOK

# Alliance University (formerly Nyack College) Factbook, Fall 2019

Initial printing Dec 2019

Electronic copy available at [www.nyack.edu/facts](http://www.nyack.edu/facts)

*For more information, contact:*

Office of Institutional Research  
Alliance University (formerly Nyack College)  
1 South Blvd  
Nyack, NY 10960

(845) 675-4417  
[ir@nyack.edu](mailto:ir@nyack.edu)

## Revisions Log

<u>Revision Date</u>	<u>Page / Table</u>	<u>Item</u>	<u>Change</u>
1.6.19	Enroll. by Denom.	Program / location columns	Added additional
1.6.19	Retention Rates (UG)	HEOP	Revised NYC numbers
1.22.19	Faculty		Addition of data
9.01.22	All	Logo, font, colors, name	Rebranding

# TABLE OF CONTENTS

Key to Abbreviations & Notes on Reporting Conventions	4
<b>Enrollment</b>	
Total Headcount by Program (Credit & Audit)	5
Enrollment Profiles (Credit Only)	
Institutional Summary	6
by Site	7
by Program	
Traditional Undergraduate	8
Organizational Management (OM)	9
Alliance Theological Seminary	10
Alliance Graduate School of Counseling	11
Education (Graduate)	12
Master of Business Administration (MBA)	13
Master of Science in Organizational Leadership (MSOL)	14
Master of Arts in Ancient Judaism & Christian Origins (MAJCO)	15
Master of Social Work (MSW)	16
by Admitted State	17
by NY County	18
by Country	19-20
by Denomination	21-22
C&MA	23
by Pell Grant Recipients & 1st Generation Students	24
by Degrees/Majors	25-27
by Department (Traditional Undergraduate)	28
<b>Admissions</b>	
Traditional Undergraduate	29
First-Time Full-Time Freshmen (FTFTF) - Bachelor-seeking	30
First-Time Freshmen (FTF)	31
<b>Retention &amp; Graduation</b>	
Retention Rates	
Traditional Undergraduate	32
Graduate	33
Graduation Rates	
Traditional Undergraduate	34-35
OM	36
Graduate	37-38
Degrees Conferred	39-40
<b>Faculty</b>	
Faculty	41
<b>Facilities</b>	
Facilities & Student Housing	42
<b>Financial Information</b>	
Tuition & Fees	43

## Key to Abbreviations (Site / Program Names)

### Sites

Corr Fac	NY Correctional Facilities
NYC	Manhattan, NY <i>("NYC" &amp; "Manhattan" used interchangeably)</i>
Online	Online <i>(Refers only to online degree programs, not courses)</i>
PR	San Juan, Puerto Rico
Rockland	Nyack, NY

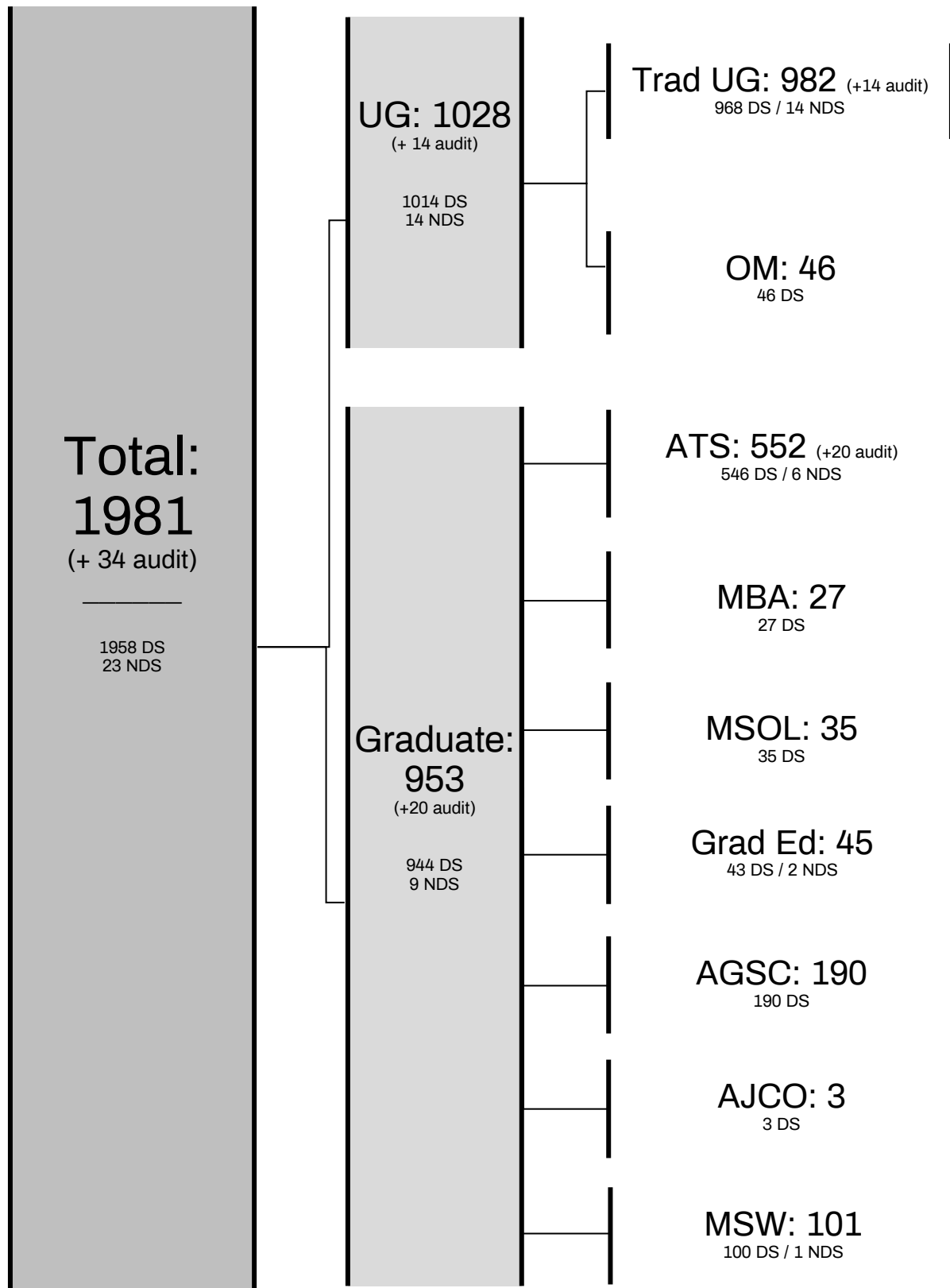
### Programs

AGSC	Alliance Graduate School of Counseling <i>(includes the M.A. in Mental Health Counseling and M.A. in Marriage &amp; Family Therapy)</i>
ATS	Alliance Theological Seminary
Grad Ed	School of Education (graduate programs)
MAJCO	Master of Arts in Ancient Judaism & Christian Origins
MBA	Master of Business Administration
MFT	Marriage & Family Therapy (AGSC program)
MHC	Mental Health Counseling (AGSC program)
MSOL	Master of Science in Organizational Leadership
MSW	Master of Social Work
OM	Adult Degree-Completion Program <i>(encompasses bachelor-level programs in Organizational Management, Healthcare Management, &amp; Church Management, as well as an associate-level program in Liberal Arts &amp; Sciences)</i>
UG	Undergraduate (traditional, semester-based program)

## Notes on Reporting Conventions

- 1 The "census date" (the date of the data extraction from campus systems) for enrollment and most other reports is on or about October 1 (October 15 prior to 2015).
- 2 Enrollment figures for cohort-based programs reflect active registrations as of the census date
- 3 Students enrolled in two programs (generally matriculated in one and non-matriculated in the other) are counted only once in the program in which they are matriculated. In the case of matriculated enrollment in two programs, enrollment is counted in the higher-level program.

# Total Headcount by Program (Credit & Audit)



Cont - In project or thesis continuation

DS - Degree-Seeking

NDS - Non-Degree-Seeking

## Enrollment Profile

Institutional Summary	Total	
	N	%
Credit Students	1,981	
<i>Audit Only (not included in counts below)</i>	34	
<b>Total Head Count</b>	<b>2,015</b>	

Matriculation		
Degree-Seeking	1958	98.8
Non-Degree	23	1.2
Load Status*		
Full-time	1233	62.2
Part-time	748	37.8
FTE*		
	1482.3	
Gender		
Female	1151	58.1
Male	830	41.9
Race/Ethnicity		
American Indian / Alaskan Native	10	0.5
Asian	206	10.4
Black / African American	601	30.3
Hispanic / Latino	622	31.4
Nat Hawaiian / Other Pacif Island	4	0.2
White	302	15.2
Two or More Races	55	2.8
Non-Resident / Int'l	132	6.7
Unknown	49	2.5
Age		
≤ 22	528	26.7
23-29	443	22.4
30-39	369	18.6
40-49	318	16.1
50-59	234	11.8
60+	89	4.5
Average	34.4	

\* FT defined as 12 credits for UG, 9 credits for Grad, 6 credits for DMin

## Enrollment Profile

by Site	NYC		Rockland		Corr Facilities		Puerto Rico		Online <sup>^</sup>	
	N	%	N	%	N	%	N	%	N	%
<b>Total</b> (credit only)	<b>1,077</b>		<b>411</b>		<b>77</b>		<b>167</b>		<b>249</b>	
Percentage	54.4%		20.7%		3.9%		8.4%		12.6%	
Audit Only - not inc. in counts below	29		4		0		0		1	

Matriculation										
Degree-Seeking	<b>1074</b>	99.7	<b>408</b>	99.3	<b>77</b>	100.0	<b>164</b>	98.2	<b>235</b>	94.4
Non-Degree	<b>3</b>	0.3	<b>3</b>	0.7	<b>0</b>	0.0	<b>3</b>	1.8	<b>14</b>	5.6
Load Status*										
Full-time	<b>664</b>	61.7	<b>379</b>	92.2	<b>64</b>	83.1	<b>21</b>	12.6	<b>105</b>	42.2
Part-time	<b>413</b>	38.3	<b>32</b>	7.8	<b>13</b>	16.9	<b>146</b>	87.4	<b>144</b>	57.8
FTE*										
FTE	<b>801.7</b>		<b>389.7</b>		<b>68.3</b>		<b>69.7</b>		<b>153.0</b>	
FTE %	54.1%		26.3%		4.6%		4.7%		10.3%	
Gender										
Female	<b>665</b>	61.7	<b>246</b>	59.9	<b>0</b>	0.0	<b>76</b>	45.5	<b>164</b>	65.9
Male	<b>412</b>	38.3	<b>165</b>	40.1	<b>77</b>	100.0	<b>91</b>	54.5	<b>85</b>	34.1
Race/Ethnicity										
Amer Indian / Alask Nat	<b>6</b>	0.6	<b>4</b>	1.0	<b>0</b>	0.0	<b>0</b>	0.0	<b>0</b>	0.0
Asian	<b>150</b>	13.9	<b>33</b>	8.0	<b>2</b>	2.6	<b>0</b>	0.0	<b>21</b>	8.4
Black / African American	<b>415</b>	38.5	<b>81</b>	19.7	<b>34</b>	44.2	<b>0</b>	0.0	<b>71</b>	28.5
Hispanic / Latino	<b>290</b>	26.9	<b>99</b>	24.1	<b>17</b>	22.1	<b>167</b>	100.0	<b>49</b>	19.7
Nat Hawaiian / Other Pac Isl	<b>3</b>	0.3	<b>1</b>	0.2	<b>0</b>	0.0	<b>0</b>	0.0	<b>0</b>	0.0
White	<b>101</b>	9.4	<b>108</b>	26.3	<b>10</b>	13.0	<b>0</b>	0.0	<b>83</b>	33.3
Two or More Races	<b>24</b>	2.2	<b>19</b>	4.6	<b>5</b>	6.5	<b>0</b>	0.0	<b>7</b>	2.8
Non-Resident / Int'l	<b>69</b>	6.4	<b>54</b>	13.1	<b>1</b>	1.3	<b>0</b>	0.0	<b>8</b>	3.2
Unknown	<b>19</b>	1.8	<b>12</b>	2.9	<b>8</b>	10.4	<b>0</b>	0.0	<b>10</b>	4.0
Age										
≤22	<b>210</b>	19.5	<b>307</b>	74.7	<b>0</b>	0.0	<b>1</b>	0.6	<b>10</b>	4.0
23-29	<b>277</b>	25.7	<b>67</b>	16.3	<b>13</b>	16.9	<b>24</b>	14.4	<b>62</b>	24.9
30-39	<b>208</b>	19.3	<b>18</b>	4.4	<b>26</b>	33.8	<b>45</b>	26.9	<b>72</b>	28.9
40-49	<b>172</b>	16.0	<b>11</b>	2.7	<b>22</b>	28.6	<b>55</b>	32.9	<b>58</b>	23.3
50-59	<b>147</b>	13.6	<b>5</b>	1.2	<b>12</b>	15.6	<b>32</b>	19.2	<b>38</b>	15.3
60+	<b>63</b>	5.8	<b>3</b>	0.7	<b>4</b>	5.2	<b>10</b>	6.0	<b>9</b>	3.6
Average	<b>35.9</b>		<b>23.3</b>		<b>40.8</b>		<b>42.8</b>		<b>38.5</b>	

\* FT defined as 12 credits for UG, 9 credits for Grad, 6 credits for DMin

<sup>^</sup> refers to students in online degree programs

## Enrollment Profile

Traditional Undergraduate	Total		NYC		Rockland		Corr Fac		Puerto Rico		Online	
	N	%	N	%	N	%	N	%	N	%	N	%
<b>Total</b> (credit only)	<b>982</b>		<b>416</b>		<b>402</b>		<b>73</b>		<b>37</b>		<b>54</b>	
Percentage	100.0%		42.4%		40.9%		7.4%		3.8%		5.5%	
Audit Only - not inc. in counts below	<b>14</b>		<b>10</b>		<b>4</b>		<b>0</b>		<b>0</b>		<b>0</b>	

Matriculation												
Degree-Seeking	<b>968</b>	98.6	<b>414</b>	99.5	<b>399</b>	99.3	<b>73</b>	100.0	<b>37</b>	100.0	<b>45</b>	83.3
Non-Degree	<b>14</b>	1.4	<b>2</b>	0.5	<b>3</b>	0.7	<b>0</b>	0.0	<b>0</b>	0.0	<b>9</b>	16.7
Load Status												
Full-time (≥ 12 credits)	<b>812</b>	82.7	<b>341</b>	82.0	<b>376</b>	93.5	<b>62</b>	84.9	<b>7</b>	18.9	<b>26</b>	48.1
Part-time (≤ 11 credit hours)	<b>170</b>	17.3	<b>75</b>	18.0	<b>26</b>	6.5	<b>11</b>	15.1	<b>30</b>	81.1	<b>28</b>	51.9
<b>FTE</b>	<b>868.7</b>	100.0	<b>366.0</b>	42.1	<b>384.7</b>	44.3	<b>65.7</b>	7.6	<b>17.0</b>	2.0	<b>35.3</b>	4.1
Classification												
Freshmen	<b>320</b>	32.6	<b>163</b>	39.2	<b>97</b>	24.1	<b>37</b>	50.7	<b>13</b>	35.1	<b>10</b>	18.5
Sophomore	<b>281</b>	28.6	<b>117</b>	28.1	<b>107</b>	26.6	<b>16</b>	21.9	<b>12</b>	32.4	<b>29</b>	53.7
Junior	<b>216</b>	22.0	<b>79</b>	19.0	<b>106</b>	26.4	<b>19</b>	26.0	<b>7</b>	18.9	<b>5</b>	9.3
Senior	<b>151</b>	15.4	<b>55</b>	13.2	<b>89</b>	22.1	<b>1</b>	1.4	<b>5</b>	13.5	<b>1</b>	1.9
Non-Degree	<b>14</b>	1.4	<b>2</b>	0.5	<b>3</b>	0.7	<b>0</b>	0.0	<b>0</b>	0.0	<b>9</b>	16.7
Gender												
Female	<b>544</b>	55.4	<b>263</b>	63.2	<b>244</b>	60.7	<b>0</b>	0.0	<b>10</b>	27.0	<b>27</b>	50.0
Male	<b>438</b>	44.6	<b>153</b>	36.8	<b>158</b>	39.3	<b>73</b>	100.0	<b>27</b>	73.0	<b>27</b>	50.0
Race/Ethnicity												
Amer Indian / Alaskan Nat	<b>9</b>	0.9	<b>5</b>	1.2	<b>4</b>	1.0	<b>0</b>	0.0	<b>0</b>	0.0	<b>0</b>	0.0
Asian	<b>62</b>	6.3	<b>26</b>	6.3	<b>33</b>	8.2	<b>2</b>	2.7	<b>0</b>	0.0	<b>1</b>	1.9
Black / African American	<b>293</b>	29.8	<b>167</b>	40.1	<b>75</b>	18.7	<b>33</b>	45.2	<b>0</b>	0.0	<b>18</b>	33.3
Hispanic / Latino	<b>327</b>	33.3	<b>164</b>	39.4	<b>96</b>	23.9	<b>16</b>	21.9	<b>37</b>	100.0	<b>14</b>	25.9
Nat Hawaiian / Oth Pacif Isl	<b>3</b>	0.3	<b>2</b>	0.5	<b>1</b>	0.2	<b>0</b>	0.0	<b>0</b>	0.0	<b>0</b>	0.0
White	<b>147</b>	15.0	<b>14</b>	3.4	<b>108</b>	26.9	<b>8</b>	11.0	<b>0</b>	0.0	<b>17</b>	31.5
Two or More Races	<b>33</b>	3.4	<b>7</b>	1.7	<b>19</b>	4.7	<b>5</b>	6.8	<b>0</b>	0.0	<b>2</b>	3.7
Non-Resident / Int'l	<b>76</b>	7.7	<b>21</b>	5.0	<b>54</b>	13.4	<b>1</b>	1.4	<b>0</b>	0.0	<b>0</b>	0.0
Unknown	<b>32</b>	3.3	<b>10</b>	2.4	<b>12</b>	3.0	<b>8</b>	11.0	<b>0</b>	0.0	<b>2</b>	3.7
Age												
≤ 22	<b>507</b>	51.6	<b>192</b>	46.2	<b>307</b>	76.4	<b>0</b>	0.0	<b>1</b>	2.7	<b>7</b>	13.0
23-29	<b>193</b>	19.7	<b>95</b>	22.8	<b>67</b>	16.7	<b>13</b>	17.8	<b>4</b>	10.8	<b>14</b>	25.9
30-39	<b>114</b>	11.6	<b>50</b>	12.0	<b>18</b>	4.5	<b>24</b>	32.9	<b>7</b>	18.9	<b>15</b>	27.8
40-49	<b>88</b>	9.0	<b>37</b>	8.9	<b>5</b>	1.2	<b>21</b>	28.8	<b>15</b>	40.5	<b>10</b>	18.5
50-59	<b>62</b>	6.3	<b>34</b>	8.2	<b>3</b>	0.7	<b>12</b>	16.4	<b>6</b>	16.2	<b>7</b>	13.0
60+	<b>18</b>	1.8	<b>8</b>	1.9	<b>2</b>	0.5	<b>3</b>	4.1	<b>4</b>	10.8	<b>1</b>	1.9
<b>Average</b>	<b>28.4</b>		<b>29.3</b>		<b>22.7</b>		<b>40.7</b>		<b>44.2</b>		<b>36.1</b>	



## Enrollment Profile

Organizational Management	Total		NY		Online		Corr Facilities	
	N	%	N	%	N	%	N	%
<b>In Program (BPS/BS) - see below</b>	<b>37</b>		<b>14</b>		<b>23</b>		<b>0</b>	
Organizational Management	35		14		21		0	
Church Management	0		0		0		0	
Healthcare Management	2		0		2		0	
<i>Not included in counts below:</i>								
<b>Other Coursework Only</b>	<b>6</b>		<b>1</b>		<b>1</b>		<b>4</b>	
Full-time	2		0		0		2	
Part-time	4		1		1		2	
<b>Continuation Only (Part-time)</b>	<b>3</b>		<b>2</b>		<b>1</b>		<b>0</b>	
<b>Total (credit only)</b>	<b>46</b>		<b>17</b>		<b>25</b>		<b>4</b>	
<i>Audit Only - not included in counts below</i>	0		0		0		0	
<b>FTE</b>	<b>34.0</b>	<b>100.0</b>	<b>11.0</b>	<b>32.4</b>	<b>20.3</b>	<b>59.8</b>	<b>2.7</b>	<b>7.8</b>

### IN PROGRAM (BPS/BS)

Matriculation								
Degree-Seeking	<b>37</b>	<i>100.0</i>	<b>14</b>	<i>100.0</i>	<b>23</b>	<i>100.0</i>	<b>0</b>	<i>N/A</i>
Non-Degree	<b>0</b>	<i>0.0</i>	<b>0</b>	<i>0.0</i>	<b>0</b>	<i>0.0</i>	<b>0</b>	<i>N/A</i>
Load Status								
Full-time (≥ 12 credits)	<b>26</b>	<i>70.3</i>	<b>8</b>	<i>57.1</i>	<b>18</b>	<i>78.3</i>	<b>0</b>	<i>N/A</i>
Part-time (≤ 11 credit hours)	<b>11</b>	<i>29.7</i>	<b>6</b>	<i>42.9</i>	<b>5</b>	<i>21.7</i>	<b>0</b>	<i>N/A</i>
Gender								
Female	<b>22</b>	<i>59.5</i>	<b>6</b>	<i>42.9</i>	<b>16</b>	<i>69.6</i>	<b>0</b>	<i>N/A</i>
Male	<b>15</b>	<i>40.5</i>	<b>8</b>	<i>57.1</i>	<b>7</b>	<i>30.4</i>	<b>0</b>	<i>N/A</i>
Race/Ethnicity								
Amer Indian / Alaskan Nat	<b>0</b>	<i>0.0</i>	<b>0</b>	<i>0.0</i>	<b>0</b>	<i>0.0</i>	<b>0</b>	<i>N/A</i>
Asian	<b>1</b>	<i>2.7</i>	<b>0</b>	<i>0.0</i>	<b>1</b>	<i>4.3</i>	<b>0</b>	<i>N/A</i>
Black / African American	<b>9</b>	<i>24.3</i>	<b>5</b>	<i>35.7</i>	<b>4</b>	<i>17.4</i>	<b>0</b>	<i>N/A</i>
Hispanic / Latino	<b>14</b>	<i>37.8</i>	<b>8</b>	<i>57.1</i>	<b>6</b>	<i>26.1</i>	<b>0</b>	<i>N/A</i>
Nat Hawaiian / Other Pacif Island	<b>0</b>	<i>0.0</i>	<b>0</b>	<i>0.0</i>	<b>0</b>	<i>0.0</i>	<b>0</b>	<i>N/A</i>
White	<b>9</b>	<i>24.3</i>	<b>0</b>	<i>0.0</i>	<b>9</b>	<i>39.1</i>	<b>0</b>	<i>N/A</i>
Two or More Races	<b>0</b>	<i>0.0</i>	<b>0</b>	<i>0.0</i>	<b>0</b>	<i>0.0</i>	<b>0</b>	<i>N/A</i>
Non-Resident / Int'l	<b>1</b>	<i>2.7</i>	<b>1</b>	<i>7.1</i>	<b>0</b>	<i>0.0</i>	<b>0</b>	<i>N/A</i>
Unknown	<b>3</b>	<i>8.1</i>	<b>0</b>	<i>0.0</i>	<b>3</b>	<i>13.0</i>	<b>0</b>	<i>N/A</i>
Age								
≤ 22	<b>0</b>	<i>0.0</i>	<b>0</b>	<i>0.0</i>	<b>0</b>	<i>0.0</i>	<b>0</b>	<i>N/A</i>
23-29	<b>5</b>	<i>13.5</i>	<b>2</b>	<i>14.3</i>	<b>3</b>	<i>13.0</i>	<b>0</b>	<i>N/A</i>
30-39	<b>9</b>	<i>24.3</i>	<b>2</b>	<i>14.3</i>	<b>7</b>	<i>30.4</i>	<b>0</b>	<i>N/A</i>
40-49	<b>14</b>	<i>37.8</i>	<b>7</b>	<i>50.0</i>	<b>7</b>	<i>30.4</i>	<b>0</b>	<i>N/A</i>
50-59	<b>7</b>	<i>18.9</i>	<b>1</b>	<i>7.1</i>	<b>6</b>	<i>26.1</i>	<b>0</b>	<i>N/A</i>
60+	<b>2</b>	<i>5.4</i>	<b>2</b>	<i>14.3</i>	<b>0</b>	<i>0.0</i>	<b>0</b>	<i>N/A</i>
<b>Average</b>	<b>42.9</b>		<b>45.3</b>		<b>41.4</b>		<b>N/A</b>	

## Enrollment Profile

ATS	Total		NYC						Online		Puerto Rico	
	N	%	N	%	N	%	N	%	N	%	N	%
<b>Degree</b>			<b>Master</b>		<b>DMin</b>		<b>Sub-Total</b>		<b>Master</b>		<b>Master</b>	
<b>In Program</b>	<b>547</b>		<b>298</b>		<b>59</b>		<b>357</b>		<b>60</b>		<b>130</b>	
<i>Thesis Continuation</i>	5				5		5					
<i>- not inc. in counts below</i>												
<b>Total (credit only)</b>	<b>552</b>		<b>298</b>		<b>64</b>		<b>362</b>		<b>60</b>		<b>130</b>	
Percentage	100.0%		54.0%		11.6%		65.6%		10.9%		23.6%	
<i>Audit Only - not inc. in counts below</i>	<b>20</b>		19		0		19		1		0	

<b>Matriculation</b>												
Degree-Seeking	541	98.9	298	####	59	####	357	####	57	95.0	127	97.7
Non-Degree	6	1.1	0	0.0	0	0.0	0	0.0	3	5.0	3	2.3
<b>Load Status*</b>												
Full-time	203	37.1	134	45.0	44	74.6	178	49.9	11	18.3	14	10.8
Part-time	344	62.9	164	55.0	15	25.4	179	50.1	49	81.7	116	89.2
<b>FTE</b>	<b>317.7</b>	<b>100.0</b>	<b>188.7</b>	<b>59.4</b>	<b>49.0</b>	<b>15.4</b>	<b>237.7</b>	<b>74.8</b>	<b>27.3</b>	<b>8.6</b>	<b>52.7</b>	<b>16.6</b>
<b>Gender</b>												
Female	266	48.6	161	54.0	17	28.8	178	49.9	22	36.7	66	50.8
Male	281	51.4	137	46.0	42	71.2	179	50.1	38	63.3	64	49.2
<b>Race/Ethnicity</b>												
Amer Indian / Alaskan Nat	0	0.0	0	0.0	0	0.0	0	0.0	0	0.0	0	0.0
Asian	93	17.0	73	24.5	10	16.9	83	23.2	10	16.7	0	0.0
Black / African American	139	25.4	111	37.2	14	23.7	125	35.0	14	23.3	0	0.0
Hispanic / Latino	175	32.0	40	13.4	2	3.4	42	11.8	3	5.0	130	####
Nat Hawaiian / Oth PI	1	0.2	1	0.3	0	0.0	1	0.3	0	0.0	0	0.0
White	81	14.8	34	11.4	20	33.9	54	15.1	27	45.0	0	0.0
Two or More Races	12	2.2	9	3.0	2	3.4	11	3.1	1	1.7	0	0.0
Non-Resident / Int'l	40	7.3	25	8.4	11	18.6	36	10.1	4	6.7	0	0.0
Unknown	6	1.1	5	1.7	0	0.0	5	1.4	1	1.7	0	0.0
<b>Age</b>												
≤ 22	5	0.9	4	1.3	0	0.0	4	1.1	1	1.7	0	0.0
23-29	97	17.7	64	21.5	2	3.4	66	18.5	11	18.3	20	15.4
30-39	140	25.6	80	26.8	6	10.2	86	24.1	16	26.7	38	29.2
40-49	140	25.6	64	21.5	19	32.2	83	23.2	17	28.3	40	30.8
50-59	115	21.0	61	20.5	17	28.8	78	21.8	11	18.3	26	20.0
60+	50	9.1	25	8.4	15	25.4	40	11.2	4	6.7	6	4.6
<b>Average</b>	<b>42.9</b>		<b>41.6</b>		<b>52.1</b>		<b>43.4</b>		<b>41.1</b>		<b>42.4</b>	

\* FT defined as 9 credits for Grad, 6 credits for DMin

## Enrollment Profile

AGSC	Total		NYC						Online	
	N	%	N	%	N	%	N	%	N	%
Degree			MHC		MFT		Sub-Total		MHC	
<b>Total (credit only)</b>	<b>190</b>		<b>94</b>		<b>44</b>		<b>138</b>		<b>52</b>	
Percentage	100.0%						72.6%		27.4%	
Audit Only - not included in counts	<b>0</b>		<b>0</b>		<b>0</b>		<b>0</b>		<b>0</b>	

Matriculation										
Degree-Seeking	<b>190</b>	100.0	<b>94</b>	100.0	<b>44</b>	100.0	<b>138</b>	100.0	<b>52</b>	100.0
Non-Degree	<b>0</b>	0.0	<b>0</b>	0.0	<b>0</b>	0.0	<b>0</b>	0.0	<b>0</b>	0.0
Load Status										
Full-time (≥ 9 credits)	<b>62</b>	32.6	<b>29</b>	30.9	<b>8</b>	18.2	<b>37</b>	26.8	<b>25</b>	48.1
Part-time (≤ 8 credits)	<b>128</b>	67.4	<b>65</b>	69.1	<b>36</b>	81.8	<b>101</b>	73.2	<b>27</b>	51.9
<b>FTE</b>	<b>104.7</b>	100.0	<b>50.7</b>	48.4	<b>20.0</b>	19.1	<b>70.7</b>	67.5	<b>34.0</b>	32.5
Gender										
Female	<b>158</b>	83.2	<b>76</b>	80.9	<b>33</b>	75.0	<b>109</b>	79.0	<b>49</b>	94.2
Male	<b>32</b>	16.8	<b>18</b>	19.1	<b>11</b>	25.0	<b>29</b>	21.0	<b>3</b>	5.8
Race/Ethnicity										
Amer Ind / Alaskan Nat	<b>1</b>	0.5	<b>1</b>	1.1	<b>0</b>	0.0	<b>1</b>	0.7	<b>0</b>	0.0
Asian	<b>40</b>	21.1	<b>24</b>	25.5	<b>10</b>	22.7	<b>34</b>	24.6	<b>6</b>	11.5
Black / African American	<b>62</b>	32.6	<b>36</b>	38.3	<b>10</b>	22.7	<b>46</b>	33.3	<b>16</b>	30.8
Hispanic / Latino	<b>48</b>	25.3	<b>20</b>	21.3	<b>13</b>	29.5	<b>33</b>	23.9	<b>15</b>	28.8
Nat Hawaiian / Other PI	<b>0</b>	0.0	<b>0</b>	0.0	<b>0</b>	0.0	<b>0</b>	0.0	<b>0</b>	0.0
White	<b>24</b>	12.6	<b>8</b>	8.5	<b>7</b>	15.9	<b>15</b>	10.9	<b>9</b>	17.3
Two or More Races	<b>6</b>	3.2	<b>3</b>	3.2	<b>1</b>	2.3	<b>4</b>	2.9	<b>2</b>	3.8
Non-Resident / Int'l	<b>4</b>	2.1	<b>1</b>	1.1	<b>1</b>	2.3	<b>2</b>	1.4	<b>2</b>	3.8
Unknown	<b>5</b>	2.6	<b>1</b>	1.1	<b>2</b>	4.5	<b>3</b>	2.2	<b>2</b>	3.8
Age										
≤ 22	<b>3</b>	1.6	<b>3</b>	3.2	<b>0</b>	0.0	<b>3</b>	2.2	<b>0</b>	0.0
23-29	<b>72</b>	37.9	<b>45</b>	47.9	<b>11</b>	25.0	<b>56</b>	40.6	<b>16</b>	30.8
30-39	<b>48</b>	25.3	<b>22</b>	23.4	<b>13</b>	29.5	<b>35</b>	25.4	<b>13</b>	25.0
40-49	<b>30</b>	15.8	<b>10</b>	10.6	<b>7</b>	15.9	<b>17</b>	12.3	<b>13</b>	25.0
50-59	<b>29</b>	15.3	<b>11</b>	11.7	<b>10</b>	22.7	<b>21</b>	15.2	<b>8</b>	15.4
60+	<b>8</b>	4.2	<b>3</b>	3.2	<b>3</b>	6.8	<b>6</b>	4.3	<b>2</b>	3.8
<b>Average</b>	<b>37.3</b>		<b>34.6</b>		<b>40.9</b>		<b>36.6</b>		<b>39.2</b>	

## Enrollment Profile

Education (Graduate)	Total		NYC		Online	
	N	%	N	%	N	%
<b>Total</b> <i>(credit only)</i>	45		10		35	
Percentage	100.0%		22.2%		77.8%	
<i>Audit Only - not included in counts below</i>	0		0		0	

Matriculation						
Degree-Seeking	43	95.6	10	100.0	33	94.3
Non-Degree	2	4.4	0	0.0	2	5.7
Load Status						
Full-time (≥ 9 credits)	19	42.2	7	70.0	12	34.3
Part-time (≤ 8 credit hours)	26	57.8	3	30.0	23	65.7
<b>FTE</b>	<b>27.7</b>	<b>100.0</b>	<b>8.0</b>	<b>28.9</b>	<b>19.7</b>	<b>71.1</b>
Gender						
Female	40	88.9	10	100.0	30	85.7
Male	5	11.1	0	0.0	5	14.3
Race/Ethnicity						
Amer Indian / Alaskan Nat	0	0.0	0	0.0	0	0.0
Asian	4	8.9	1	10.0	3	8.6
Black / African American	8	17.8	3	30.0	5	14.3
Hispanic / Latino	10	22.2	3	30.0	7	20.0
Nat Hawaiian / Other Pacif Island	0	0.0	0	0.0	0	0.0
White	18	40.0	2	20.0	16	45.7
Two or More Races	1	2.2	0	0.0	1	2.9
Non-Resident / Int'l	3	6.7	1	10.0	2	5.7
Unknown	1	2.2	0	0.0	1	2.9
Age						
≤ 22	3	6.7	3	30.0	0	0.0
23-29	17	37.8	3	30.0	14	40.0
30-39	15	33.3	3	30.0	12	34.3
40-49	6	13.3	0	0.0	6	17.1
50-59	4	8.9	1	10.0	3	8.6
60+	0	0.0	0	0.0	0	0.0
<b>Average</b>	<b>33.4</b>		<b>30.3</b>		<b>34.3</b>	

## Enrollment Profile

MBA	Total		NYC		Online	
	N	%	N	%	N	%
<b>IN PROGRAM</b> (see below)	27		27		0	
<b>PROJECT CONT.</b> - not included in counts below	0		0		0	
<b>Total</b> (credit only)	27		27		0	
Percentage	100.0%		100.0%		0.0%	
Audit Only - not included in counts below	0		0		0	
<b>FTE</b>	26.3	100.0	26.3	100.0	0.0	0.0

Matriculation						
Degree-Seeking	27	100.0	27	100.0	0	
Non-Degree	0	0.0	0	0.0	0	
Load Status						
Full-time (≥ 9 credits)	26	96.3	26	96.3	0	
Part-time (≤ 8 credit hours)	1	3.7	1	3.7	0	
Gender						
Female	7	25.9	7	25.9	0	
Male	20	74.1	20	74.1	0	
Race/Ethnicity						
Amer Indian / Alaskan Nat	0	0.0	0	0.0	0	
Asian	1	3.7	1	3.7	0	
Black / African American	8	29.6	8	29.6	0	
Hispanic / Latino	7	25.9	7	25.9	0	
Nat Hawaiian / Other Pacif Island	0	0.0	0	0.0	0	
White	5	18.5	5	18.5	0	
Two or More Races	1	3.7	1	3.7	0	
Non-Resident / Int'l	5	18.5	5	18.5	0	
Unknown	0	0.0	0	0.0	0	
Age						
≤ 22	4	14.8	4	14.8	0	
23-29	16	59.3	16	59.3	0	
30-39	0	0.0	0	0.0	0	
40-49	7	25.9	7	25.9	0	
50-59	0	0.0	0	0.0	0	
60+	0	0.0	0	0.0	0	
Average	29.9		29.9		N/A	

## Enrollment Profile

MSOL	Total		NYC		Online	
	N	%	N	%	N	%
<b>IN PROGRAM</b> (see below)	30		12		18	
<b>THESIS CONT.</b> - not included in counts below	5		2		3	
<b>Total</b> (credit only)	35		14		21	
Percentage	100.0%		40.0%		60.0%	
Audit Only - not included in counts below	0		0		0	
<b>FTE</b>	25.0	100.0	9.3	37.3	15.7	62.7

Matriculation						
Degree-Seeking	30	100.0	12	100.0	18	100.0
Non-Degree	0	0.0	0	0.0	0	0.0
Load Status						
Full-time (≥ 9 credits)	20	66.7	7	58.3	13	72.2
Part-time (≤ 8 credit hours)	10	33.3	5	41.7	5	27.8
Gender						
Female	23	76.7	7	58.3	16	88.9
Male	7	23.3	5	41.7	2	11.1
Race/Ethnicity						
Amer Indian / Alaskan Nat	0	0.0	0	0.0	0	0.0
Asian	0	0.0	0	0.0	0	0.0
Black / African American	15	50.0	7	58.3	8	44.4
Hispanic / Latino	6	20.0	3	25.0	3	16.7
Nat Hawaiian / Other Pacif Island	0	0.0	0	0.0	0	0.0
White	6	20.0	1	8.3	5	27.8
Two or More Races	2	6.7	1	8.3	1	5.6
Non-Resident / Int'l	0	0.0	0	0.0	0	0.0
Unknown	1	3.3	0	0.0	1	5.6
Age						
≤ 22	3	10.0	1	8.3	2	11.1
23-29	5	16.7	1	8.3	4	22.2
30-39	14	46.7	6	50.0	8	44.4
40-49	4	13.3	2	16.7	2	11.1
50-59	2	6.7	0	0.0	2	11.1
60+	2	6.7	2	16.7	0	0.0
<b>Average</b>	<b>36.8</b>		<b>39.4</b>		<b>35.0</b>	

## Enrollment Profile

Ancient Judaism and Christian Origins	Total		NYC		Online	
	N	%	N	%	N	%
<b>Total</b> ( <i>credit only</i> )	<b>3</b>		<b>1</b>		<b>2</b>	
<i>Audit Only - not included in counts below</i>	0		0		0	

<b>Matriculation</b>						
Degree-Seeking	<b>3</b>	<i>100.0</i>	<b>1</b>	<i>100.0</i>	<b>2</b>	<i>100.0</i>
Non-Degree	<b>0</b>	<i>0.0</i>	<b>0</b>	<i>0.0</i>	<b>0</b>	<i>0.0</i>
<b>Load Status</b>						
Full-time ( $\geq 9$ credits)	<b>0</b>	<i>0.0</i>	<b>0</b>	<i>0.0</i>	<b>0</b>	<i>0.0</i>
Part-time ( $\leq 8$ credit hours)	<b>3</b>	<i>100.0</i>	<b>1</b>	<i>100.0</i>	<b>2</b>	<i>100.0</i>
<b>FTE</b>	<b>1.0</b>	<i>100.0</i>	<b>0.3</b>	<i>33.3</i>	<b>0.7</b>	<i>66.7</i>
<b>Gender</b>						
Female	<b>1</b>	<i>33.3</i>	<b>0</b>	<i>0.0</i>	<b>1</b>	<i>50.0</i>
Male	<b>2</b>	<i>66.7</i>	<b>1</b>	<i>100.0</i>	<b>1</b>	<i>50.0</i>
<b>Race/Ethnicity</b>						
Amer Indian / Alaskan Nat	<b>0</b>	<i>0.0</i>	<b>0</b>	<i>0.0</i>	<b>0</b>	<i>0.0</i>
Asian	<b>0</b>	<i>0.0</i>	<b>0</b>	<i>0.0</i>	<b>0</b>	<i>0.0</i>
Black / African American	<b>2</b>	<i>66.7</i>	<b>0</b>	<i>0.0</i>	<b>2</b>	<i>100.0</i>
Hispanic / Latino	<b>0</b>	<i>0.0</i>	<b>0</b>	<i>0.0</i>	<b>0</b>	<i>0.0</i>
Nat Hawaiian / Other Pacif Island	<b>0</b>	<i>0.0</i>	<b>0</b>	<i>0.0</i>	<b>0</b>	<i>0.0</i>
White	<b>1</b>	<i>33.3</i>	<b>1</b>	<i>100.0</i>	<b>0</b>	<i>0.0</i>
Two or More Races	<b>0</b>	<i>0.0</i>	<b>0</b>	<i>0.0</i>	<b>0</b>	<i>0.0</i>
Non-Resident / Int'l	<b>0</b>	<i>0.0</i>	<b>0</b>	<i>0.0</i>	<b>0</b>	<i>0.0</i>
Unknown	<b>0</b>	<i>0.0</i>	<b>0</b>	<i>0.0</i>	<b>0</b>	<i>0.0</i>
<b>Age</b>						
$\leq 22$	<b>0</b>	<i>0.0</i>	<b>0</b>	<i>0.0</i>	<b>0</b>	<i>0.0</i>
23-29	<b>1</b>	<i>33.3</i>	<b>1</b>	<i>100.0</i>	<b>0</b>	<i>0.0</i>
30-39	<b>0</b>	<i>0.0</i>	<b>0</b>	<i>0.0</i>	<b>0</b>	<i>0.0</i>
40-49	<b>1</b>	<i>33.3</i>	<b>0</b>	<i>0.0</i>	<b>1</b>	<i>50.0</i>
50-59	<b>0</b>	<i>0.0</i>	<b>0</b>	<i>0.0</i>	<b>0</b>	<i>0.0</i>
60+	<b>1</b>	<i>33.3</i>	<b>0</b>	<i>0.0</i>	<b>1</b>	<i>50.0</i>
<b>Average</b>	<b>44.3</b>		<b>24.4</b>		<b>54.2</b>	

## Enrollment Profile

Social Work (MSW)	NYC	
	N	%
<b>Total</b> <i>(credit only)</i>	<b>101</b>	
<i>Audit Only - not included in counts below</i>	0	

Matriculation		
Degree-Seeking	100	99.0
Non-Degree	1	1.0
Load Status		
Full-time ( $\geq 9$ credits)	63	62.4
Part-time ( $\leq 8$ credit hours)	38	37.6
<b>FTE</b>	<b>75.7</b>	<b>100.0</b>
Gender		
Female	83	82.2
Male	18	17.8
Race/Ethnicity		
Amer Indian / Alaskan Nat	0	0.0
Asian	4	4.0
Black / African American	55	54.5
Hispanic / Latino	32	31.7
Nat Hawaiian / Other Pacif Island	0	0.0
White	6	5.9
Two or More Races	0	0.0
Non-Resident / Int'l	3	3.0
Unknown	1	1.0
Age		
$\leq 22$	3	3.0
23-29	37	36.6
30-39	24	23.8
40-49	22	21.8
50-59	11	10.9
60+	4	4.0
<b>Average</b>	<b>36.3</b>	



## Enrollment by Admitted State

State	Total		NYC	Rockland	PR	Online	Corr Fac
	N	%					
<b>NY &amp; NJ</b>	<b>1439</b>	<b>72.6</b>	<b>86.3</b>	<b>64.5</b>			
New York	1216		802	205	1	132	76
New Jersey	223		127	60		36	
<b>Mid-Atlantic</b>	<b>39</b>	<b>2.0</b>					
DC	1					1	
Delaware	1			1			
Maryland	7		1	3		3	
Pennsylvania	24		9	9		6	
Virginia	6		2	1		3	
<b>New England</b>	<b>58</b>	<b>2.9</b>					
Connecticut	37		22	6	1	8	
Massachusetts	14		1	9	1	3	
New Hampshire	1			1			
Rhode Island	2		1	1			
Vermont	4		1	3			
<b>South/Southeast</b>	<b>54</b>	<b>2.7</b>					
Alabama	3		1			2	
Florida	20		5	11	1	3	
Georgia	6		4			2	
North Carolina	8		2	3		3	
Oklahoma	1					1	
South Carolina	4		2	1		1	
Tennessee	1					1	
Texas	11		3	7		1	
<b>Midwest</b>	<b>38</b>	<b>1.9</b>					
Illinois	7		1	2		4	
Iowa	1					1	
Indiana	3					3	
Kansas	3		1	1		1	
Michigan	2					2	
Minnesota	3		1	2			
Missouri	3					3	
Nebraska	2					2	
Ohio	10		1	5		4	
Wisconsin	4		3	1			
<b>West</b>	<b>49</b>	<b>2.5</b>					
Alaska	1			1			
Arizona	3			2		1	
California	27		10	11		6	
Colorado	4		1	2		1	
Hawaii	2		1	1			
Nevada	1			1			
New Mexico	1		1				
Oregon	4		1	3			
Utah	1			1			
Washington	4		2	1		1	
Wyoming	1					1	
<b>Puerto Rico</b>	<b>164</b>	<b>8.3</b>		1	163		
<b>International</b>	<b>136</b>	<b>6.9</b>	70	55		10	1
<b>US Living Abroad</b>	<b>4</b>	<b>0.2</b>	1			3	
<b>Total</b>	<b>1981</b>	<b>100</b>	<b>1077</b>	<b>411</b>	<b>167</b>	<b>249</b>	<b>77</b>

Total number of states represented: 40 (+ DC & Puerto Rico)

## Enrollment by County (NY)

County	Total		NYC				Rockland	PR	Online	Corr Fac
	N	%	UG	ATS	Grad	Sub-Total	UG			
<b>Rockland &amp; Nearby</b>	<b>174</b>	<b>8.8</b>	3.8	7.2	10.0	6.6	17.8	0.0	12.0	0.0
Rockland	90	4.5	2	12	17	<b>31</b>	43		16	
Orange	28	1.4	5	2	2	<b>9</b>	14		5	
Westchester	56	2.8	9	12	10	<b>31</b>	16		9	
<b>NYC Boroughs</b>	<b>820</b>	<b>41.4</b>	76.9	43.1	60.8	61.2	20.4	0.6	30.5	0.0
Bronx	157	7.9	62	27	29	<b>118</b>	23	1	15	
Brooklyn	227	11.5	83	42	71	<b>196</b>	14		17	
Manhattan	213	10.8	89	34	32	<b>155</b>	32		26	
Queens	194	9.8	80	46	39	<b>165</b>	15		14	
Staten Island	29	1.5	12	7	6	<b>25</b>			4	
<b>Long Island</b>	<b>89</b>	<b>4.5</b>	4.2	7.2	4.1	5.2	3.6	0.0	7.2	0.0
Nassau	50	2.5	9	17	8	<b>34</b>	5		11	
Suffolk	39	2.0	9	9	4	<b>22</b>	10		7	
<b>All Other NY</b>	<b>133</b>	<b>6.7</b>	0.9	1.7	2.1	1.5	8.0	0.0	3.2	98.7
All Other NY	133	6.7	4	6	6	<b>16</b>	33		8	76
<b>Outside of NY</b>	<b>764</b>	<b>38.6</b>	14.2	40.9	23.0	25.5	50.1	99.4	46.6	1.3
Other States	628	31.7	38	112	55	<b>205</b>	151	166	106	
International	136	6.9	22	36	12	<b>70</b>	55		10	1
<b>US Living Abroad</b>	<b>1</b>	<b>0.1</b>	0.0	0.0	0.0	0.0	0.0	0.0	0.4	0.0
US Abroad	1	0.1				<b>0</b>			1	
<b>Total</b>	<b>1981</b>	<b>100</b>	<b>424</b>	<b>362</b>	<b>291</b>	<b>1077</b>	<b>411</b>	<b>167</b>	<b>249</b>	<b>77</b>

## Enrollment by Country

Country	Total		NYC				Rockland	PR	Online	Corr Fac
	N	%	UG	ATS	Grad	Sub-Total	UG			
<b>USA</b>	<b>1751</b>	<b>88.4</b>				<b>87.0</b>				
			372	306	259	<b>937</b>	340	167	235	72
<b>Other N. Amer.</b>	<b>19</b>	<b>1.0</b>								
Canada	15			10	2	<b>12</b>	1		2	
Mexico	4		3			<b>3</b>				1
<b>Central America</b>	<b>11</b>	<b>0.6</b>								
Costa Rica	1		1			<b>1</b>				
Guatemala	6		1			<b>1</b>	5			
Honduras	3		1		1	<b>2</b>			1	
Panama	1		1			<b>1</b>				
<b>South America</b>	<b>30</b>	<b>1.5</b>								
Brazil	16		4	3	2	<b>9</b>	5		2	
Chile	1					<b>0</b>	1			
Colombia	6		2	2	1	<b>5</b>	1			
Ecuador	2			1	1	<b>2</b>				
Guyana	1		1			<b>1</b>				
Peru	3		2	1		<b>3</b>				
Venezuela	1			1		<b>1</b>				
<b>Caribbean</b>	<b>58</b>	<b>2.9</b>								
Antigua	1			1		<b>1</b>				
Barbados	1				1	<b>1</b>				
Dominica	3		2	1		<b>3</b>				
Dom. Rep.	11		7		1	<b>8</b>	2			1
Dutch Antilles	1		1			<b>1</b>				
Haiti	14		5		3	<b>8</b>	6			
Jamaica	18		2	4	4	<b>10</b>	4		2	2
St. Lucia	1					<b>0</b>	1			
St. Vinc & Gren	1					<b>0</b>	1			
Trin. & Tbgo.	7		1	1	2	<b>4</b>			2	1
<b>Asia</b>	<b>70</b>	<b>3.5</b>								
China	11			3	2	<b>5</b>	6			
Georgia	1					<b>0</b>	1			
Hong Kong	1			1		<b>1</b>				
India	4		2	1		<b>3</b>	1			
Indonesia	3		3			<b>3</b>				
Japan	1			1		<b>1</b>				
Korea, South	44		11	18	3	<b>32</b>	9		3	
Philippines	3			1	1	<b>2</b>	1			
Syria	1			1		<b>1</b>				
Vietnam	1			1		<b>1</b>				

## Enrollment by Country (continued)

Country	Total		NYC				Rockland	PR	Online	Corr Fac
	N	%	UG	ATS	Grad	Sub-Total	UG			
<b>Oceania</b>		0.0								
<b>Europe</b>	27	1.4								
Austria	2					0	2			
France	3				2	2	1			
Germany	9					0	9			
Italy	1					0	1			
Lithuania	1			1		1				
Spain	5		1			1	4			
Switzerland	1					0	1			
UK	5			1	1	2	3			
<b>Africa</b>	15	0.8								
Burkina Faso	1					0			1	
Ethiopia	3			1		1	2			
Ghana	2		1			1	1			
Kenya	2					0	1		1	
Liberia	1				1	1				
Malawi	1					0	1			
Nigeria	4			1	3	4				
South Africa	1				1	1				
<b>Unknown</b>	0	0.0				0				
<b>Total</b>	<b>1981</b>	<b>100</b>	<b>424</b>	<b>362</b>	<b>291</b>	<b>1077</b>	<b>411</b>	<b>167</b>	<b>249</b>	<b>77</b>

**Total number of countries represented: 50**

NOTE: USA = U.S. citizens. All other countries = international & permanent resident students

## Enrollment by Denomination

Denomination	Inst		Trad UG					OM	ATS				Grad (non-ATS)	
	N	%	NYC	Rock	PR	ONL	Corr		DMin	NYC	PR	ONL	NYC	ONL
<b>Adventist</b>	<b>29</b>	<b>1.5</b>												
ADVENTIST CHR CHURCH	7			7										
SEVENTH DAY ADVENTIST	22		11	4						1			1	3
<b>Anglican / Episcopal</b>	<b>2</b>	<b>0.1</b>												
ANGLICAN CHURCH OF CAN	0													
REFORMED EPISCOPAL	0													
THE EPISCOPAL CHURCH	2			1										1
<b>Baptist</b>	<b>181</b>	<b>9.1</b>												
AMERIC. BAPTIST IN USA	32		8	9						5		1	5	4
BAPT GENERAL CONFERENCE	0													
BAPT MISS ASSOC OF AMER	2		1	1										
BAPTIST- OTHER	120		34	23	4		3	3	2	21	8	2	16	4
CONS BAPT ASSOC OF AMER	1		1											
INDEPENDENT BAPTIST	9		4	2						1		2		
NAT'L BAPTIST CONVENTION	4		1						1				1	1
SEVENTH DAY BAP GEN CONF	2								1		1			
SOUTHERN BAPTIST CONV	11		2	4					1	2				2
<b>Brethren</b>	<b>2</b>	<b>0.1</b>												
BRETHREN CHURCH (ASHLAND)	0													
CHURCH OF THE BRETHREN	1									1				
BRETHREN- OTHER	1								1					
<b>C&amp;MA</b>	<b>237</b>	<b>12.0</b>	16	45	10	3	1	5	29	41	44	23	12	8
<b>Church of God (Anderson, IN)</b>	<b>8</b>	<b>0.4</b>	3	4						1				
<b>Churches of Christ-Chr Ch</b>	<b>73</b>	<b>3.7</b>												
CHR CHURCH (Disc of Christ)	63		22	21	2	1				2	8		4	3
CHURCHES OF CHRIST	10		5	4									1	
<b>Churches of God (Gen Conf)</b>	<b>15</b>	<b>0.8</b>	2	6		1				3			1	2
<b>Evangelical Cong Church</b>	<b>10</b>	<b>0.5</b>	2	2				1		4		1		
<b>Evangelical Covenant Church</b>	<b>6</b>	<b>0.3</b>	1			1				3			1	
<b>Evangelical Free Church</b>	<b>10</b>	<b>0.5</b>	4	2									3	1
<b>Inter/Multidenominational</b>	<b>17</b>	<b>0.9</b>	3	1		1				5	1		6	
<b>Jewish</b>	<b>2</b>	<b>0.1</b>												
MESSIANIC JEWISH	2			1						1				
<b>Lutheran</b>	<b>16</b>	<b>0.8</b>												
EVANG LUTHERAN IN AMER	5		2	2									1	
LUTHERAN BRETHREN	0													
LUTHERAN- OTHER	11			4				1		1	1		4	
<b>Mennonite</b>	<b>8</b>	<b>0.4</b>												
MENNONITE BRETHREN	1								1					
MENNONITE CHURCH	2		1		1									
MENNONITE- OTHER	5				3	1						1		
<b>Methodist</b>	<b>42</b>	<b>2.1</b>												
AFRICAN METH EPISC (AME)	13		1			1			1	7			2	1
AFRICAN METH EPISC ZION	4		1							3				
FREE METHODIST CHURCH	1												1	
METHODIST- OTHER	11		3		1					3			4	
UNITED METHODIST	10		1	6						2				1
WESLEYAN	3										2			1
<b>Nat'l Assoc of Cong Chr Ch</b>	<b>0</b>	<b>0.0</b>												
<b>Nazarene</b>	<b>14</b>	<b>0.7</b>	2	5					3	2			2	
<b>Nondenominational</b>	<b>416</b>	<b>21.0</b>	94	82		11	3	9	11	76		9	95	26

## Enrollment by Denomination (continued)

Denomination	Inst		Trad UG					OM	ATS				Grad (non-ATS)	
	N	%	NYC	Rock	PR	ONL	Corr		DMin	NYC	PR	ONL	NYC	ONL
<b>Orthodox</b>	<b>9</b>	<b>0.5</b>												
ORTHODOX CHURCH IN AMER	1			1										
ORTHODOX- OTHER	8			6			1					1		
<b>Pentecostal</b>	<b>376</b>	<b>19.0</b>												
APOSTOLIC	21		6	9		1		1				4		
APOSTOLIC PENTECOSTAL	27		8	5					6		3	3	2	
ASSEMBLIES OF GOD	94		29	29	1			2	1	12	1	12	7	
CHURCH OF GOD (Clev, TN)	12		4						3	2	1	1	1	
CHURCH OF GOD- OTHER	0													
CHURCH OF GOD IN CHRIST	16		9						4			2	1	
FOUR SQUARE GOSPEL CH	0													
FULL GOSPEL	16		4	3		2		1	3	1		1	1	
PENTECOSTAL ASSEMB OF CAN	0													
PENTECOSTAL- OTHER	190		67	27	1	1	5	5	4	28	24	23	5	
<b>Presbyterian</b>	<b>76</b>	<b>3.8</b>												
ASSOC REF PRESBYTERIAN	0													
EVANGELICAL PRESBYTERIAN	15		3	4			1		5	2				
ORTHODOX PRESBYTERIAN	3						1		1			1		
PRESB CHURCH IN AMERICA	23		4	5				2	3	1	1	5	2	
PRESBYTERIAN CHURCH (USA)	22		6	3		1			7			2	3	
REFORMED PRESBYTERIAN	7			1					3			2	1	
PRESBYTERIAN - OTHER	6							1	4				1	
<b>Reformed</b>	<b>22</b>	<b>1.1</b>												
CHRISTIAN REFORMED CHURCH	14		2	4					4			1	3	
DUTCH REFORMED	0													
REFORMED CHURCH IN AMER	8		2	3					3					
<b>Roman Catholic</b>	<b>79</b>	<b>4.0</b>	9	37			7	1	1	1	1	11	11	
<b>Salvation Army</b>	<b>5</b>	<b>0.3</b>				1		2				1	1	
<b>United Church of Christ</b>	<b>3</b>	<b>0.2</b>	1						1			1		
<b>Other</b>	<b>72</b>	<b>3.6</b>												
AFRICAN INLAND CHURCH	2		1	1										
BIBLE CHURCH / FELLOWSHIP	3		2								1			
EVANGELICAL	22		5	1	2			1	3	6	1	3		
HOLINESS	0													
INDEPENDENT	38		1		12					25				
MUSLIM	6						6							
PROTESTANT	0													
UNITED CHURCH OF CANADA	0													
UNITARIAN UNIVERSALIST	1								1					
<b>Undesignated / Unknown</b>	<b>251</b>	<b>12.7</b>	28	27		28	43	14	4	22	2	13	57	
<b>Total</b>	<b>1981</b>	<b>100.0</b>	<b>416</b>	<b>402</b>	<b>37</b>	<b>54</b>	<b>73</b>	<b>46</b>	<b>64</b>	<b>298</b>	<b>130</b>	<b>60</b>	<b>291</b>	

\* Major categories are those used by The Association of Theological Schools

## Enrollment by C&MA (Christian & Missionary Alliance)

Site	Program	C&MA Students	Total Students	Percentage
<b>NYC</b>		<b>98</b>	<b>1077</b>	<b>9.1%</b>
	Traditional UG	16	416	3.8%
	ATS	41	298	13.8%
	DMin	29	64	45.3%
	AGSC	5	138	3.6%
	Grad Ed	0	10	0.0%
	MBA	1	27	3.7%
	MSOL	1	14	7.1%
	MAJCO	1	1	100.0%
	MSW	4	101	4.0%
	Adult Degree-Completion	0	8	0.0%
<b>Rockland</b>		<b>46</b>	<b>411</b>	<b>11.2%</b>
	Traditional UG	45	402	11.2%
	Adult Degree-Completion	1	9	11.1%
<b>Puerto Rico</b>		<b>54</b>	<b>167</b>	<b>32.3%</b>
	ATS	44	130	33.8%
	Traditional UG	10	37	27.0%
<b>Online</b>		<b>38</b>	<b>249</b>	<b>15.3%</b>
	Traditional UG	3	54	5.6%
	AGSC	2	52	3.8%
	ATS	23	60	38.3%
	Grad Ed	3	35	8.6%
	MAJCO	0	2	0.0%
	MSOL	3	21	14.3%
	Adult Degree-Completion	4	25	16.0%
<b>Correctional Facilities</b>		<b>1</b>	<b>77</b>	<b>1.3%</b>
	Traditional UG	1	73	1.4%
	Adult Degree-Completion	0	4	0.0%
<b>TOTAL</b>		<b>237</b>	<b>1,981</b>	<b>12.0%</b>

## Enrollment by Pell Grant Recipients & 1st Generation Students

	TOTAL		TRAD UG (NYC)		TRAD UG (Rockland)		TRAD UG (Puerto)		TRAD UG (Online)		TRAD UG (Corr Fac)		OM	
	N	%	N	%	N	%	N	%	N	%	N	%	N	%
<b>Pell Grant</b>	<b>569</b>	<b>56.1</b>	<b>280</b>	<b>67.6</b>	<b>192</b>	<b>48.1</b>	<b>27</b>	<b>73.0</b>	<b>24</b>	<b>53.3</b>	<b>34</b>	<b>46.6</b>	<b>12</b>	<b>26.1</b>
Total enrollment (degree-seeking)	1,014		414		399		37		45		73		46	
Female	330	59.1	185	70.6	120	49.6	8	80.0	11	57.9	0	N/A	6	24.0
Male	239	52.4	95	62.5	72	45.9	19	70.4	13	50.0	34	46.6	6	28.6
Amer Ind / Alask Nat	6	66.7	4	80.0	2	50.0	0	N/A	0	N/A	0	N/A	0	N/A
Asian	27	44.3	13	52.0	12	37.5	0	N/A	1	100.0	0	0.0	1	100.0
Black / African Amer	191	63.0	116	69.5	51	68.0	0	N/A	5	38.5	18	54.5	1	6.7
Hispanic / Latino	238	70.2	127	77.9	65	67.7	27	73.0	7	58.3	4	25.0	8	53.3
Nat Hawaii/Other PI	2	66.7	2	100.0	0	0.0	0	N/A	0	N/A	0	N/A	0	N/A
White	67	43.2	6	42.9	47	43.9	0	N/A	8	53.3	4	50.0	2	18.2
Two or More Races	19	57.6	5	71.4	9	47.4	0	N/A	2	100.0	3	60.0	0	N/A
Non-Resident / Int'l	0	0.0	0	0.0	0	0.0	0	N/A	0	N/A	0	0.0	0	0.0
Unknown	19	55.9	7	70.0	6	54.5	0	N/A	1	50.0	5	62.5	0	0.0
<b>1st Generation*</b>	<b>329</b>	<b>44.6</b>	<b>169</b>	<b>53.8</b>	<b>99</b>	<b>31.3</b>	<b>18</b>	<b>56.3</b>	<b>14</b>	<b>45.2</b>	<b>13</b>	<b>65.0</b>	<b>16</b>	<b>64.0</b>
# of FAFSA apps	738		314		316		32		31		20		25	

\* as determined by FAFSA applications - applicants included in the ratio when at least one parent's education is known - students identified as first-generation when all known parents did not attend college  
(NOTE: this definition was modified beginning with the 2019-20 AY)



## Degrees / Majors by Site

	TOTAL	NYC	Rockland	PR	Online	Corr Fac
<b>Alliance Theological Seminary &amp; College of Bible and Christian Ministry</b>						
<b>Alliance Theological Seminary</b>						
MA (Biblical Literature)	33	28			5	
MA in Biblical Studies	83	49			34	
MA in Intercultural Studies	13	13				
MDiv	280	189		73	18	
MPS	73	19		54		
DMin	59	59				
DMin ( <i>Project Continuation</i> )	5	5				
Non-Degree	6			3	3	
<b>Sub-Total</b>	<b>552</b>	<b>362</b>	<b>0</b>	<b>130</b>	<b>60</b>	<b>0</b>
<b>College of Bible and Christian Ministry</b>						
AA - Biblical Studies	12	7			5	
AA - Intercultural Studies	1		1			
BA - Biblical & Theological Studies	37	27	10			
BA - Intercultural Studies	13	1	12			
BS - Pastoral Ministry	94	37	20	37		
BS - Youth & Family Studies	15		15			
MA - Ancient Judaism & Christian Origins	3	1			2	
<b>Sub-Total</b>	<b>175</b>	<b>73</b>	<b>58</b>	<b>37</b>	<b>7</b>	<b>0</b>
<b>TOTAL (ATS &amp; CBCM)</b>	<b>727</b>	<b>435</b>	<b>58</b>	<b>167</b>	<b>67</b>	<b>0</b>

<b>College of Arts &amp; Sciences</b>						
<b>Liberal Arts &amp; Sciences</b>						
AA - Liberal Arts & Sciences	83	18	13		4	48
BA - Biology	16	3	13			
BA - English	8	2	6			
BA - History	2		2			
BA - Interdisciplinary Studies^	2		2			
BA - Math	1	1				
BA - Psychology	101.5	54.5	32		15	
BA - Sociology	2		2			
BS - Communications	22	10	12			
BS - Computer Science	3		3			
BS - Criminal Justice	50	23	27			
BS - Information Technology	4	2	2			
BS - Interdisciplinary Studies^	64	35	4			25
Non-Degree	3	1	2			
Undecided	1		1			
<b>Sub-Total</b>	<b>362.5</b>	<b>149.5</b>	<b>121</b>	<b>0</b>	<b>19</b>	<b>73</b>

## Degrees / Majors by Site (continued)

	TOTAL	NYC	Rockland	PR	Online	Corr Fac
<b>School of Music</b>						
AS - Music	14	12	2			
BA - Music	35.5	33.5	2			
BS - Music and Worship	15	9	6			
MusB - Composition	2	2				
MusB - Gospel Performance	8.5	8.5				
MusB - Music Education	14	8	6			
MusB - Performance (Instrumental)	3	3				
MusB - Performance (Piano)	4		4			
MusB - Performance (Vocal)	19	16	3			
SMB - Sacred Music	1	1				
<b>Sub-Total</b>	<b>116</b>	<b>93</b>	<b>23</b>	<b>0</b>	<b>0</b>	<b>0</b>
<b>TOTAL (CAS)</b>	<b>478.5</b>	<b>242.5</b>	<b>144</b>	<b>0</b>	<b>19</b>	<b>73</b>

### College of Graduate and Professional Programs

#### Alliance Graduate School of Counseling

MA - Marriage & Family Therapy	44	44				
MA - Mental Health Counseling	146	94			52	
AGSC Pre-reqs	9				9	
<b>Sub-Total</b>	<b>199</b>	<b>138</b>	<b>0</b>	<b>0</b>	<b>61</b>	<b>0</b>

#### School of Business and Leadership

AS - Business Administration	25	1	3		21	
BS - Accounting	12	2	10			
BS - Business Administration	118.5	39.5	79			
BS - Healthcare Management	2				2	
BS/BPS - Organizational Management	35	8	6		21	
<i>Other Coursework</i>	6		1		1	4
<i>Project / Thesis Continuation</i>	3		2		1	
MBA	27	27				
MSOL	30	12			18	
MSOL ( <i>Thesis Continuation</i> )	5	2			3	
<b>Sub-Total</b>	<b>263.5</b>	<b>91.5</b>	<b>101</b>	<b>0</b>	<b>67</b>	<b>4</b>

#### School of Education

BS - Adol Ed - English	2		2			
BS - Adol Ed - Social St / History	1		1			
BS - Childhood Education	27	14	13			
BS - Early Childhood Education	2		2			
BS - Early Child Ed / Child Ed	1		1			
BS/MS - Childhood Special Education	11	5	6			
MAT - TESOL	4				4	
MS - Childhood Education	15	4			11	
MS - Childhood Special Education	6	1			5	
MS - Inclusive Education	9				9	

## Degrees / Majors by Site (continued)

	TOTAL	NYC	Rockland	PR	Online	Corr Fac
MS - TESOL	4				4	
MSED Pre-Reqs	1	1				
Non-Degree (Graduate)	2				2	
<b>Sub-Total</b>	<b>85</b>	<b>25</b>	<b>25</b>	<b>0</b>	<b>35</b>	<b>0</b>
<b>Cheryl Phenecie School of Nursing</b>						
BS - Nursing	65	1	64			
<b>Sub-Total</b>	<b>65</b>	<b>1</b>	<b>64</b>	<b>0</b>	<b>0</b>	<b>0</b>
<b>School of Social Work</b>						
BS - Social Work	62	43	19			
MSW	100	100				
Non-Degree (MSW)	1	1				
<b>Sub-Total</b>	<b>163</b>	<b>144</b>	<b>19</b>	<b>0</b>	<b>0</b>	<b>0</b>
<b>TOTAL (Grad &amp; Prof Programs)</b>	<b>775.5</b>	<b>399.5</b>	<b>209</b>	<b>0</b>	<b>163</b>	<b>4</b>

### SITE TOTALS

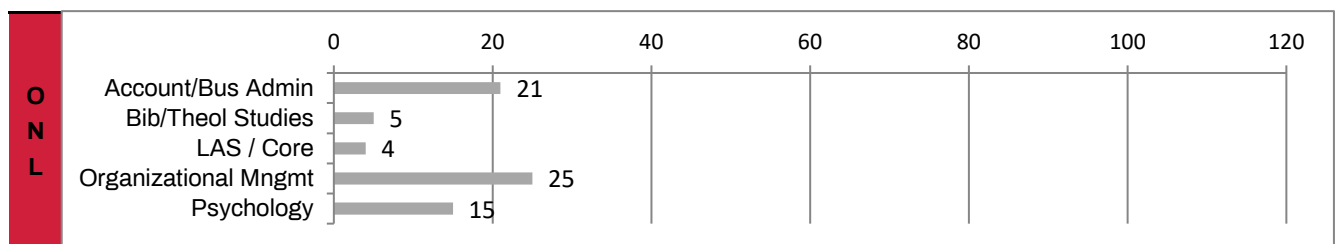
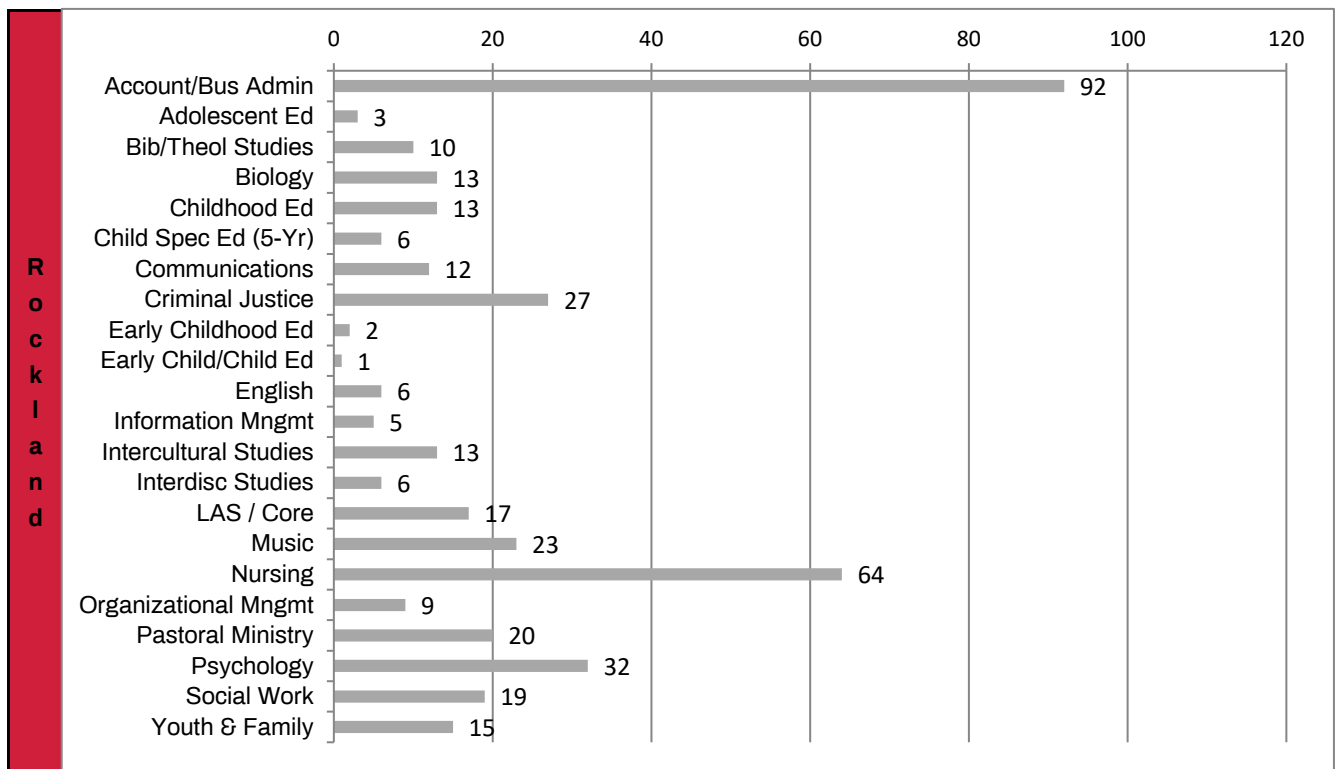
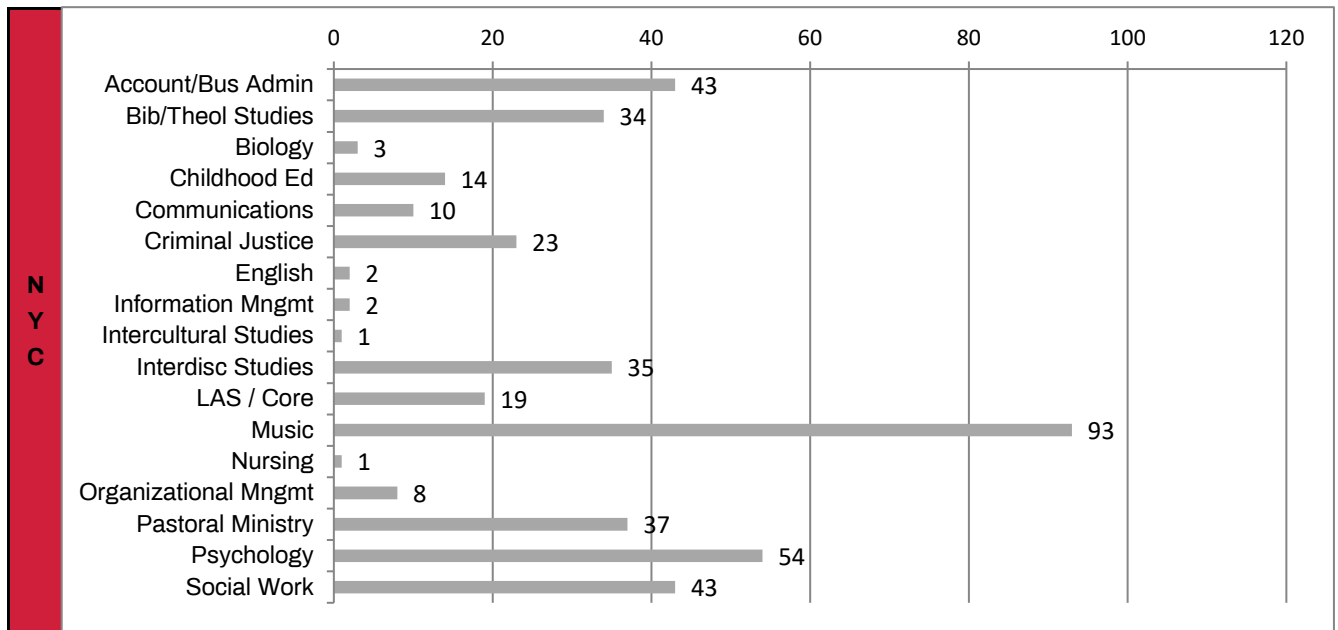
<b>1981</b>	<b>1077</b>	<b>411</b>	<b>167</b>	<b>249</b>	<b>77</b>
-------------	-------------	------------	------------	------------	-----------

\* Numbers include 6 double/second majors, each counting as 0.5

^ Interdisciplinary major breakout: (2 per student)

Adolescent Education	1			
Biblical & Theological Studies	13	1		
Biology		2		
Business Administration	2	1		11
Childhood Education	8	1		
Early Childhood Education	2			
English	2	1		
Intercultural Studies	1	1		
Mathematics	1			
Music	3			
Pastoral Ministry	18	1		
Psychology	14	3		25
Social Work	4	1		14
Sociology	1			

## Enrollment by Department (Traditional Undergraduate - Assoc & Bach)

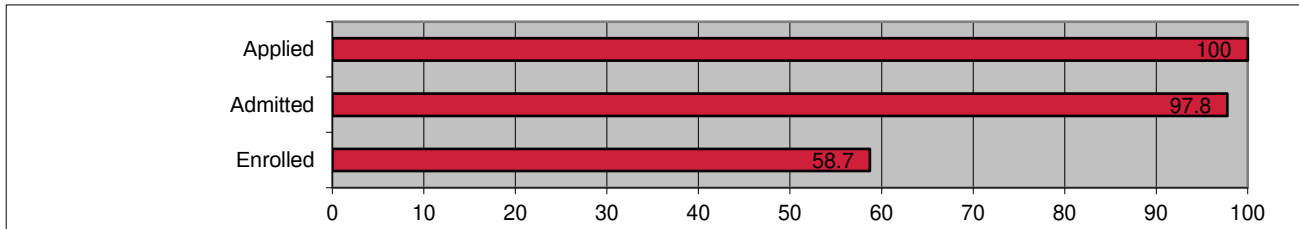


## Admissions (Traditional Undergraduate)

Total		NYC		Rockland		Puerto Rico		Online		Corr Fac	
N	%	N	%	N	%	N	%	N	%	N	%

### FTF (degree-seeking)

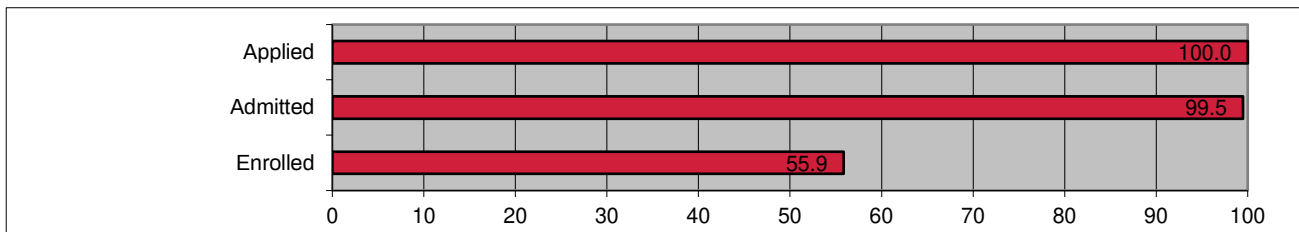
Applied (completed apps)	223		90		108		0		6		19	
Admitted	218	97.8	86	95.6	107	99.1	0	N/A	6	100.0	19	100.0
Enrolled^	<b>128</b>	<b>58.7</b>	<b>57</b>	<b>66.3</b>	<b>49</b>	<b>45.8</b>	<b>0</b>	<b>N/A</b>	<b>3</b>	<b>50.0</b>	<b>19</b>	<b>100.0</b>
Regular	91	71.1	34	59.6	35	71.4	0	N/A	3	100.0	19	100.0
Provisional	37	28.9	23	40.4	14	28.6	0	N/A	0	0.0	0	0.0



\* Additional FTF information on subsequent pages

### Transfer (degree-seeking)

Applied (completed apps)	189		70		78		7		21		13	
Admitted	188	99.5	70	100.0	77	98.7	7	100.0	21	100.0	13	100.0
Enrolled^	<b>105</b>	<b>55.9</b>	<b>41</b>	<b>58.6</b>	<b>38</b>	<b>49.4</b>	<b>5</b>	<b>71.4</b>	<b>8</b>	<b>38.1</b>	<b>13</b>	<b>100.0</b>
Regular	94	89.5	32	78.0	36	94.7	5	100.0	8	100.0	13	100.0
Provisional	11	10.5	9	22.0	2	5.3	0	0.0	0	0.0	0	0.0
Female	55	52.4	26	63.4	23	60.5	1	20.0	5	62.5	0	0.0
Male	50	47.6	15	36.6	15	39.5	4	80.0	3	37.5	13	100.0
Amer Indian / Alaskan Nat	0	0.0	0	0.0	0	0.0	0	0.0	0	0.0	0	0.0
Asian	5	4.8	1	2.4	3	7.9	0	0.0	1	12.5	0	0.0
Black / African American	38	36.2	19	46.3	10	26.3	0	0.0	2	25.0	7	53.8
Hispanic / Latino	38	36.2	14	34.1	14	36.8	5	100.0	1	12.5	4	30.8
Nat Hawaiian / Pac Island	0	0.0	0	0.0	0	0.0	0	0.0	0	0.0	0	0.0
Two or More Races	5	4.8	1	2.4	3	7.9	0	0.0	0	0.0	1	7.7
White	11	10.5	2	4.9	4	10.5	0	0.0	4	50.0	1	7.7
Non-Resident / Int'l	7	6.7	3	7.3	4	10.5	0	0.0	0	0.0	0	0.0
Unknown	1	1.0	1	2.4	0	0.0	0	0.0	0	0.0	0	0.0



^ Percentages based on number of admissions

Sources: "Applied" & "Admitted" data - Office of Admissions

"Enrolled" breakdowns - Office of Institutional Research

# Full-Time First-Time Freshmen

Degree-Seeking

FTFTF	Bachelor											
	TOTAL		NYC		Rockland		PR		ONL		Corr Fac	
	83		44		39		0		0		0	
	N	%	N	%	N	%	N	%	N	%	N	%
Female	50	60.2	25	56.8	25	64.1	0	N/A	0	N/A	0	N/A
Male	33	39.8	19	43.2	14	35.9	0	N/A	0	N/A	0	N/A
Am Ind / Alask Nat	2	2.4	2	4.5	0	0.0	0	N/A	0	N/A	0	N/A
Asian	2	2.4	1	2.3	1	2.6	0	N/A	0	N/A	0	N/A
Black / Afr Amer	16	19.3	12	27.3	4	10.3	0	N/A	0	N/A	0	N/A
Hispanic / Latino	35	42.2	25	56.8	10	25.6	0	N/A	0	N/A	0	N/A
Nat Hawaii / Pac Isl	0	0.0	0	0.0	0	0.0	0	N/A	0	N/A	0	N/A
Two or More Races	3	3.6	1	2.3	2	5.1	0	N/A	0	N/A	0	N/A
White	16	19.3	1	2.3	15	38.5	0	N/A	0	N/A	0	N/A
Non-Res / Int'l	7	8.4	1	2.3	6	15.4	0	N/A	0	N/A	0	N/A
Unknown	2	2.4	1	2.3	1	2.6	0	N/A	0	N/A	0	N/A
HS GPA Avg	2.84		2.70		3.01		N/A		N/A		N/A	
N	70		37		33		0		0		0	
% Reporting	84.3		84.1		84.6		N/A		N/A		N/A	
HS Rank Avg*	39.8		33.3		42.1		N/A		N/A		N/A	
N	23		6		17		0		0		0	
% Reporting	27.7		13.6		43.6		N/A		N/A		N/A	
SAT - ERW	497		473		517		N/A		N/A		N/A	
25th %ile - ERW	425		420		470		N/A		N/A		N/A	
75th %ile - ERW	560		540		590		N/A		N/A		N/A	
SAT - Math	481		452		505		N/A		N/A		N/A	
25th %ile - Math	405		395		410		N/A		N/A		N/A	
75th %ile - Math	535		503		570		N/A		N/A		N/A	
SAT - Total	978		925		1022		N/A		N/A		N/A	
N	57		26		31		0		0		0	
% Reporting	68.7		59.1		79.5		N/A		N/A		N/A	
ACT - Composite	20.1		22.0		19.8		N/A		N/A		N/A	
25th %ile	16		22		16		N/A		N/A		N/A	
75th %ile	23		22		25		N/A		N/A		N/A	
N	7		1		6		0		0		0	
% Reporting	8.4		2.3		15.4		N/A		N/A		N/A	
ACT/SAT^	984		932		1026		N/A		N/A		N/A	
N	61		27		34		0		0		0	
% Reporting	73.5		61.4		87.2		N/A		N/A		N/A	

NOTE: New SAT scores effective fall 2017

\* As a percentage, with lower numbers representing a higher rank

^ Includes SAT equivalents of ACT scores when only ACT scores are available

# First-Time Freshmen

## Degree-Seeking

FTF	Bachelor & Associate											
	TOTAL		NYC		Rockland		PR		ONL		Corr Fac	
	128		57		49		0		3		19	
	N	%	N	%	N	%	N	%	N	%	N	%
Female	64	50.0	34	59.6	29	59.2	0	N/A	1	33.3	0	0.0
Male	64	50.0	23	40.4	20	40.8	0	N/A	2	66.7	19	100.0
Am Ind / Alask Nat	2	1.6	2	3.5	0	0.0	0	N/A	0	0.0	0	0.0
Asian	2	1.6	1	1.8	1	2.0	0	N/A	0	0.0	0	0.0
Black / Afr Amer	31	24.2	17	29.8	5	10.2	0	N/A	1	33.3	8	42.1
Hispanic / Latino	49	38.3	30	52.6	12	24.5	0	N/A	2	66.7	5	26.3
Nat Hawaii / Pac Isl	0	0.0	0	0.0	0	0.0	0	N/A	0	0.0	0	0.0
Two or More Races	5	3.9	1	1.8	3	6.1	0	N/A	0	0.0	1	5.3
White	25	19.5	2	3.5	19	38.8	0	N/A	0	0.0	4	21.1
Non-Res / Int'l	10	7.8	2	3.5	8	16.3	0	N/A	0	0.0	0	0.0
Unknown	4	3.1	2	3.5	1	2.0	0	N/A	0	0.0	1	5.3
FT	117	91.4	51	89.5	47	95.9	0	N/A	0	0.0	19	100.0
PT	11	8.6	6	10.5	2	4.1	0	N/A	3	100.0	0	0.0
HS GPA Avg	2.84		2.68		3.01		N/A		3.31		2.20	
N	94		48		43		0		2		1	
% Reporting	73.4		84.2		87.8		N/A		66.7		N/A	
HS Rank Avg*	46.2		47.0		44.8		N/A		36.2		78.9	
N	33		9		22		0		1		1	
% Reporting	25.8		15.8		44.9		N/A		33.3		N/A	
SAT - ERW	488		468		506		N/A		N/A		N/A	
25th %ile - ERW	420		420		428		N/A		N/A		N/A	
75th %ile - ERW	540		530		575		N/A		N/A		N/A	
SAT - Math	472		444		496		N/A		N/A		N/A	
25th %ile - Math	400		380		400		N/A		N/A		N/A	
75th %ile - Math	530		500		570		N/A		N/A		N/A	
SAT - Total	960		912		1002		N/A		N/A		N/A	
N	75		35		40		0		0		0	
% Reporting	58.6		61.4		81.6		N/A		N/A		N/A	
ACT - Composite	20.0		18.5		20.4		N/A		N/A		N/A	
25th %ile	16		15		16		N/A		N/A		N/A	
75th %ile	24		N/A		24		N/A		N/A		N/A	
N	9		2		7		0		0		0	
% Reporting	7.0		3.5		14.3		N/A		N/A		N/A	
ACT/SAT^	969		918		1010		N/A		N/A		N/A	
N	80		36		44		0		0		0	
% Reporting	62.5		63.2		89.8		N/A		N/A		N/A	

NOTE: New SAT scores effective fall 2017

\* As a percentage, with lower numbers representing a higher rank

^ Includes SAT equivalents of ACT scores when only ACT scores are available

# Retention Rates

Traditional UG	TOTAL		NYC		Rockland		Puerto Rico		Online		Corr Fac	
	N	%	N	%	N	%	N	%	N	%	N	%

Fall 2018 cohort of first-time, degree-seeking undergraduate students

<b>Bachelor</b>	<b>Full-time</b>	135	<b>63.7%</b>	38	76.3%	97	58.8%	0	N/A	0	N/A	
	Re-enrolled in Fall 2019	86		29		57		0		0		
	<b>Part-time</b>	7	<b>42.9%</b>	3	100.0%	1	0.0%	1	0.0%	2	0.0%	
	Re-enrolled in Fall 2019	3		3		0		0		0		
	<b>Full-time &amp; part-time</b>	142	<b>62.7%</b>	41	78.0%	98	58.2%	1	0.0%	2	0.0%	
	Re-enrolled in Fall 2019	89		32		57		0		0		
<b>Associate</b>	<b>Full-time</b>	54	50.0%	8	100.0%	23	60.9%			23	21.7%	0
	Re-enrolled in Fall 2019	27		8		14				5		0
	<b>Part-time</b>	3	33.3%	1	0.0%	0	N/A			1	0.0%	1
	Re-enrolled in Fall 2019	1		0		0				0		1
	<b>Full-time &amp; part-time</b>	57	49.1%	9	88.9%	23	60.9%			24	20.8%	1
	Re-enrolled in Fall 2019	28		8		14				5		1
<b>Bach &amp; Assoc</b>	<b>Full-time</b>	189	59.8%	46	80.4%	120	59.2%	0	N/A	23	21.7%	0
	Re-enrolled in Fall 2019	113		37		71		0		5		0
	<b>Part-time</b>	10	40.0%	4	75.0%	1	0.0%	1	0.0%	3	0.0%	1
	Re-enrolled in Fall 2019	4		3		0		0		0		1
	<b>Full-time &amp; part-time</b>	199	58.8%	50	80.0%	121	58.7%	1	0.0%	26	19.2%	1
	Re-enrolled in Fall 2019	117		40		71		0		5		1
<b>HEOP (Bach &amp; Assoc)</b>												
	<b>Full-time</b>	26	76.9%	6	83.3%	20	75.0%					
	Re-enrolled in Fall 2019	20		5		15						

Percentages in bold are published by the U.S. Department of Education (IPEDS)



## Retention Rates

Graduate		TOTAL		NYC		Rockland		PR		Online	
		N	%	N	%	N	%	N	%	N	%
<i>Fall 2018 cohort of degree-seeking students (first-time &amp; transfer)</i>											
ATS	<b>MDiv</b>	66	63.6%	25	72.0%	23	56.5%	11	72.7%	7	42.9%
	Re-enrolled in Fall 2019	42		18		13		8		3	
	<b>MPS</b>	15	73.3%	4	75.0%	3	66.7%	8	75.0%		
	Re-enrolled in Fall 2019	11		3		2		6			
	<b>MA Biblical Literature</b>	13	84.6%	7	85.7%	1	100.0%			5	80.0%
	Re-enrolled in Fall 2019	11		6		1				4	
	<b>MA Biblical Studies</b>	41	58.5%	15	60.0%	12	50.0%			14	64.3%
	Re-enrolled in Fall 2019	24		9		6				9	
<b>MA in Intercultural Studies</b>	3	66.7%			3	66.7%					
Re-enrolled in Fall 2019	2				2						
<b>TOTAL</b>	138	<b>65.2%</b>	51	70.6%	42	57.1%	19	73.7%	26	61.5%	
Re-enrolled in Fall 2019	90		36		24		14		16		
AGSC	<b>Mental Health Counseling</b>	29	79.3%	17	76.5%					12	83.3%
	Re-enrolled in Fall 2019	23		13						10	
	<b>Marriage &amp; Family Therapy</b>	11	72.7%	11	72.7%						
	Re-enrolled in Fall 2019	8		8							
<b>TOTAL</b>	40	<b>77.5%</b>	28	75.0%					12	83.3%	
Re-enrolled in Fall 2019	31		21						10		
Grad Ed	<b>Childhood Education</b>	2	100.0%							2	100.0%
	Re-enrolled in Fall 2019	2								2	
	<b>Childhood Special Education</b>	2	100.0%							2	100.0%
	Re-enrolled in Fall 2019	2								2	
	<b>Inclusive Education</b>	7	100.0%							7	100.0%
	Re-enrolled in Fall 2019	7								7	
	<b>MAT-TESOL</b>	2	100.0%							2	100.0%
Re-enrolled in Fall 2019	2								2		
<b>MS-TESOL</b>	4	50.0%							4	50.0%	
Re-enrolled in Fall 2019	2								2		
<b>TOTAL</b>	17	<b>88.2%</b>							17	88.2%	
Re-enrolled in Fall 2019	15								15		
SBL	<b>MBA</b>	0									
	Re-enrolled in Fall 2019	0									
	<b>MSOL</b>	15	73.3%	4	75.0%	4	75.0%			7	71.4%
	Re-enrolled in Fall 2019	11		3		3				5	
<b>TOTAL</b>	15	<b>73.3%</b>	4	75.0%	4	75.0%			7	71.4%	
Re-enrolled in Fall 2019	11		3		3				5		
CAS	<b>Anc Jud &amp; Christian Orig</b>	0	<b>N/A</b>								
	Re-enrolled in Fall 2019	0									
SW	<b>MSW</b>	31	<b>90.3%</b>	31	90.3%						
	Re-enrolled in Fall 2019	28		28							

NOTE: "Re-enrolled" includes students who changed programs, but remained within the same school (e.g., ATS, AGSC, EDG)

# Graduation Rates

Fall 2013 cohort

Traditional UG (degree-seeking)	TOTAL		NYC		Rockland		Puerto Rico	
	N	%	N	%	N	%	N	%

**150% Rate** (unless otherwise noted)

(Completed assoc. or bach. degree in 3 or 6 yrs)

## First-Time (FT only)

<b>Total # Graduated</b>	90	<b>36.1%</b>	17		71		2	
<b>Total # Entered</b>	249		72	23.6%	175	40.6%	2	100.0%
Female	58	<b>41.7%</b>	10	25.6%	47	47.5%	1	100.0%
	139		39		99		1	
Male	32	<b>29.1%</b>	7	21.2%	24	31.6%	1	100.0%
	110		33		76		1	
Amer Indian / Alaskan Nat	1	<b>33.3%</b>	0	0.0%	1	50.0%	0	N/A
	3		1		2		0	
Asian	8	<b>44.4%</b>	1	100.0%	7	41.2%	0	N/A
	18		1		17		0	
Black / African American	16	<b>25.8%</b>	1	4.8%	15	36.6%	0	N/A
	62		21		41		0	
Hispanic / Latino	31	<b>40.3%</b>	13	35.1%	16	42.1%	2	100.0%
	77		37		38		2	
Nat Hawaiian / Other Pac Isl	1	<b>100.0%</b>	0	N/A	1	N/A	0	N/A
	1		0		1		0	
White	25	<b>37.3%</b>	1	33.3%	24	37.5%	0	N/A
	67		3		64		0	
Two or More Races	1	<b>20.0%</b>	0	0.0%	1	33.3%	0	N/A
	5		2		3		0	
Non-Resident / Int'l	6	<b>60.0%</b>	1	50.0%	5	62.5%	0	N/A
	10		2		8		0	
Unknown	1	<b>16.7%</b>	0	0.0%	1	100.0%	0	N/A
	6		5		1		0	
Pell Grant Recipients	48	31.4%	11	20.0%	35	36.5%	2	100.0%
	153		55		96		2	
Stafford Loan Recipients (no Pell)	33	42.9%	4	36.4%	29	43.9%	0	N/A
	77		11		66		0	
No Pell or Stafford	9	47.4%	2	33.3%	7	53.8%	0	N/A
	19		6		13		0	
Transfer-out rate	97	39.0%	21	29.2%	76	43.4%	0	0.0%
<b>Bachelor-seeking only</b>	216		58		156		2	
Completed bachelor's in 4 yrs (100% rate)	54	25.0%	12	20.7%	40	25.6%	2	100.0%
Completed bachelor's in 5 yrs (125% rate)	77	35.6%	14	24.1%	61	39.1%	2	100.0%
Completed bachelor's in 6 yrs (150% rate)	83	38.4%	15	25.9%	66	42.3%	2	100.0%

# Graduation Rates (continued)

Fall 2013 cohort

Traditional UG (degree-seeking)	TOTAL		NYC		Rockland		Puerto Rico	
	N	%	N	%	N	%	N	%

**150% Rate** (unless otherwise noted)  
*(Completed assoc. or bach. degree in 3 or 6 yrs)*

## First-Time (both FT & PT)

Total # Graduated	93	35.2%	19	24.1%	71	40.6%	3	30.0%
Total # Entered	264		79		175		10	

## Transfer (FT)

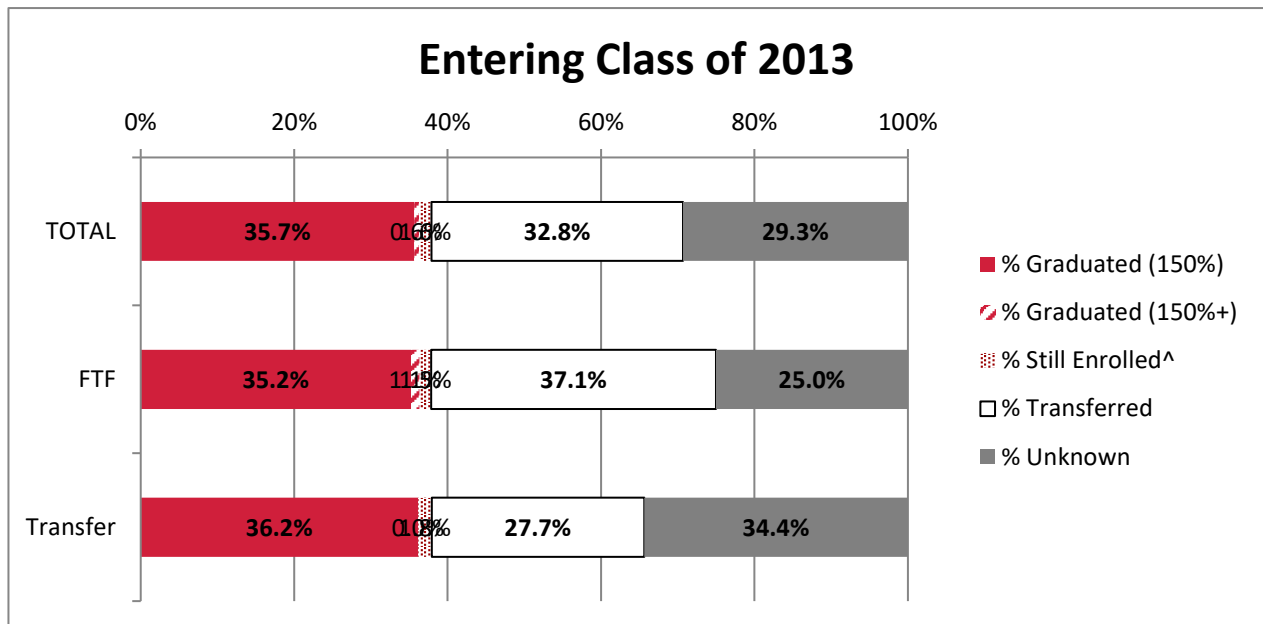
Total # Graduated	73	38.0%	22	24.4%	50	50.5%	1	33.3%
Total # Entered	192		90		99		3	

## Transfer (PT)

Total # Graduated	8	25.0%	3	18.8%	0	0.0%	5	71.4%
Total # Entered	32		16		9		7	

## Total / Overall

Total # Graduated	174	35.7%	44	23.8%	121	42.8%	9	45.0%
Total # Entered	488		185		283		20	



Percentages in bold are published by the U.S. Department of Education (IPEDS)

<sup>^</sup> Still enrolled "as of the fall census date of the fall term following 150% of the normal time to completion of their program." (IPEDS)

# Graduation Rates

Cohorts beginning 9/1/12 - 8/31/13 (Full-time)

Organizational Management (OM)	TOTAL		NY		Online	
	N	%	N	%	N	%
<b>Total # Entered</b>	<b><u>93</u></b>		<b><u>79</u></b>		<b><u>14</u></b>	
<b># Graduated within ___ time to completion</b>						
150% up to 1.5 years	16	17.2%	14	17.7%	2	14.3%
200% up to 2 years	14	32.3%	14	35.4%	0	14.3%
300% up to 3 years	7	39.8%	6	43.0%	1	21.4%
400% up to 4 years	8	48.4%	8	53.2%	0	21.4%
500% up to 5 years	4	52.7%	4	58.2%	0	21.4%
600% up to 6 years	3	55.9%	3	62.0%	0	21.4%

NOTE: Includes students starting the program with 12+ credits

# Graduation Rates

Degree-seeking students (first-time & transfer) at entry

Graduate Programs				TOTAL		NYC		Rockland		Online		PR	
				N	%	N	%	N	%	N	%	N	%
<b>ATS* (SS/FA 2013 cohort)</b>				<b>148</b>		<b>64</b>		<b>48</b>				<b>36</b>	
<b>MDiv</b>	100%	3 yrs	6		4		2						
	150%	4.5 yrs	19		9		9					1	
	200%	6 yrs	22		13		7					2	
<b>MPS</b>	100%	2 yrs	1				1						
	150%	3 yrs	7		1		1					5	
	200%	4 yrs	4		2							2	
<b>MA (Bib Lit)</b>	100%	2 yrs	3		2		1						
	150%	3 yrs	2		1		1						
	200%	4 yrs	2		2								
<b>MA in IC</b>	100%	2 yrs	1				1						
	150%	3 yrs	1				1						
	200%	4 yrs	0										
<b>TOTAL</b>	100%		11	7.4%	6	9.4%	5	10.4%					0.0%
	150%		29	27.0%	11	26.6%	12	35.4%				6	16.7%
	200%		28	45.9%	17	53.1%	7	50.0%				4	27.8%
<b>AGSC (SS/FA 2013 cohort)</b>				<b>64</b>		<b>37</b>		<b>27</b>					
<b>MHC</b>	100%	2 yrs	4	8.0%	3	8.1%	1	7.7%					
	150%	3 yrs	13	34.0%	7	27.0%	6	53.8%					
	200%	4 yrs	3	40.0%	2	32.4%	1	61.5%					
<b>MFT</b>	100%	2 yrs	1	7.1%			1	7.1%					
	150%	3 yrs	5	42.9%			5	42.9%					
	200%	4 yrs	1	50.0%			1	50.0%					
<b>TOTAL</b>	100%	2 yrs	5	7.8%	3	8.1%	2	7.4%					
	150%	3 yrs	18	35.9%	7	27.0%	11	48.1%					
	200%	4 yrs	4	42.2%	2	32.4%	2	55.6%					
<b>Education (SS/FA 2013 cohort)</b>				<b>24</b>		<b>11</b>		<b>10</b>		<b>3</b>			
<b>MSEd/TESOL</b>	100%	2 yrs	9	37.5%	3	27.3%	4	40.0%	2	66.7%			
	150%	3 yrs	3	50.0%		27.3%	3	70.0%		66.7%			
	200%	4 yrs	1	54.2%	1	36.4%		70.0%		66.7%			

\* Due to the number of ATS students who change degrees, rates are based on the total number of entering students (of any ATS degree) who then completed the respective degrees above

## Graduation Rates (continued)

Degree-seeking students (first-time & transfer) at entry

Graduate Programs				TOTAL		NYC		Rockland		Online		PR	
				N	%	N	%	N	%	N	%	N	%
<b>Bible &amp; Ministry (SS/FA 2013 cohort)</b>				<u>7</u>		<u>7</u>							
MAJCO	100%	2 yrs	0	0.0%	0	0.0%							
	150%	3 yrs	1	14.3%	1	14.3%							
	200%	4 yrs	1	28.6%	1	28.6%							
<b>Business &amp; Leadership**</b>				<u>7</u>				<u>5</u>		<u>2</u>			
MBA 2016 (1651-52)	100%	16 mos	6	85.7%			4	80.0%	2	100.0%			
	150%	24 mos	0	85.7%				80.0%		100.0%			
	200%	32 mos	0	85.7%				80.0%		100.0%			
MSOL 2017	100%	1 yr	<u>17</u>		<u>7</u>		<u>4</u>		<u>6</u>				
	150%	1.5 yrs	13	76.5%	6	85.7%	3	75.0%	4	66.7%			
	200%	2 yrs	2	88.2%	1	100.0%	1	100.0%		66.7%			
			1	94.1%		100.0%		100.0%	1	83.3%			

\*\* Rates based on degree conferral date which corresponds to traditional semester system

## Degrees Conferred by Program & Site

July 2018 - June 2019

Program	TOTAL	NYC	Rock	PR	ONL	Corr Fac
<b>Undergraduate</b>						
<b>Associate of Arts</b>						
Biblical Studies	3	2	1			
Liberal Arts & Sciences	38	10	10			18
<b>Associate of Science</b>						
Business Administration	11	1	3		7	
Music	2	1	1			
<b>Bachelor of Arts</b>						
Biblical & Theological Studies	9	5	4			
Biology	5		5			
English	9	5	4			
History	2	2				
Intercultural Studies	8		8			
Interdisciplinary Studies	2	1	1			
Mathematics	0.5		0.5			
Music	4	3	1			
Psychology	20	9	10		1	
Sociology	3		3			
<b>Bachelor of Music</b>						
Composition	1		1			
Gospel Performance	1	1				
Music Education	2		2			
Performance: Instrumental	5	3	2			
Performance: Vocal	5	5				
<b>Bachelor of Professional Studies</b>						
Organizational Management	5	3	2			
<b>Bachelor of Science</b>						
Accounting	6.5		6.5			
Adol Ed (English)	1		1			
Business Administration	26	6	20			
Childhood Education	5		5			
Church Management	1				1	
Communications	6	4	2			
Computer Science	5		5			
Criminal Justice	15	4	11			
Early Childhood Education	2		2			
Healthcare Management	2				2	
Interdisciplinary Studies	18	13	5			
Music in Worship	3	1	2			
Nursing	25		25			
Organizational Management	48	8	28		2	10
Pastoral Ministry	15	7	7	1		
Social Work	21	11	10			
Youth & Family Studies	11		11			
<b>UNDERGRADUATE Sub-Total</b>	<b>346</b>	<b>105</b>	<b>199</b>	<b>1</b>	<b>13</b>	<b>28</b>

## Degrees Conferred by Program & Site (continued)

July 2018 - June 2019

Program	TOTAL	NYC	Rock	PR	ONL	Corr Fac
<b>Alliance Theological Seminary</b>	<b>117</b>	<b>41</b>	<b>50</b>	<b>19</b>	<b>7</b>	<b>0</b>
<b>Master of Arts</b>						
Biblical Literature	11	7	2		2	
Biblical Studies	11		7		4	
Intercultural Studies	2		2			
<b>Master of Professional Studies</b>	<b>23</b>	<b>6</b>	<b>4</b>	<b>13</b>		
<b>Master of Divinity</b>	<b>53</b>	<b>28</b>	<b>18</b>	<b>6</b>	<b>1</b>	
<b>Doctor of Ministry</b>	<b>17</b>		<b>17</b>			
<b>Alliance Grad. School of Counseling</b>	<b>60</b>	<b>44</b>	<b>12</b>	<b>0</b>	<b>4</b>	<b>0</b>
<b>Master of Arts</b>						
Marriage & Family Therapy	9		9			
Mental Health Counseling	51	44	3		4	
<b>School of Bible &amp; Christian Ministry</b>						
<b>MA in Anc Jud &amp; Chr Origins</b>	<b>1</b>				<b>1</b>	
<b>School of Business &amp; Leadership</b>	<b>24</b>	<b>14</b>	<b>4</b>	<b>0</b>	<b>6</b>	<b>0</b>
<b>MS in Org Ldrshp</b>	<b>24</b>	<b>14</b>	<b>4</b>		<b>6</b>	
<b>School of Education</b>	<b>20</b>	<b>0</b>	<b>7</b>	<b>0</b>	<b>13</b>	<b>0</b>
<b>MAT in TESOL</b>	<b>1</b>				<b>1</b>	
<b>Master of Science</b>						
Childhood Education	5				5	
Childhood Special Education	10		6		4	
Inclusive Education	1		1			
TESOL	3				3	
<b>School of Social Work</b>						
<b>MSW</b>	<b>26</b>	<b>26</b>				
<b>GRADUATE Sub-Total</b>	<b>248</b>	<b>125</b>	<b>73</b>	<b>19</b>	<b>31</b>	<b>0</b>
<b>Total</b>	<b>594</b>	<b>230</b>	<b>272</b>	<b>20</b>	<b>44</b>	<b>28</b>
<b>Percent</b>	<b>100.0</b>	<b>38.7</b>	<b>45.8</b>	<b>3.4</b>	<b>7.4</b>	<b>4.7</b>

NOTE: Double majors counted at 0.5 for each major

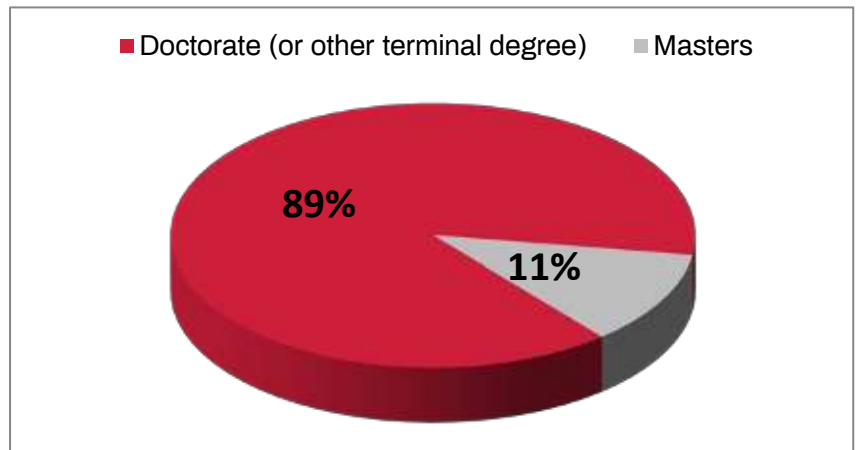


# Faculty

Instructional Faculty																
	FT										PT			TOTAL		
	Lecturer	Assistant Professor		Associate Professor		Professor		Sub Total	Adj	Oth*	Sub Total					
<b>Total</b>	<b>5</b>	<b>15</b>	<b>12</b>	<b>29</b>	<b>61</b>	<b>149</b>	<b>11</b>	<b>160</b>	<b>221</b>							
Female	2	40%	7	47%	4	33%	15	52%	28	46%	78	4	82	51%	110	50%
Male	3	60%	8	53%	8	67%	14	48%	33	54%	71	7	78	49%	111	50%
Amer Ind/ Alaska Nat	0	0%	0	0%	0	0%	0	0%	0	0%	0	0	0	0%	0	0%
Asian	1	20%	2	13%	3	25%	5	17%	11	18%	11	1	12	8%	23	10%
Black/Afr Amer	2	40%	3	20%	2	17%	3	10%	10	16%	41	4	45	28%	55	25%
Hispanic/ Latino	1	20%	8	53%	1	8%	0	0%	10	16%	32	0	32	20%	42	19%
NonRes/ Int'l	0	0%	0	0%	0	0%	0	0%	0	0%	0	0	0	0%	0	0%
White	1	20%	2	13%	6	50%	21	72%	30	49%	65	6	71	44%	101	46%

	Admin Faculty**		Emeritus	
	<b>Total</b>	<b>15</b>	<b>22</b>	
Female	9	60%	5	23%
Male	6	40%	17	77%
Amer Ind/ Alaska Nat	0	0%	0	0%
Asian	1	7%	0	0%
Black/Afr Amer	4	27%	2	9%
Hispanic/ Latino	2	13%	0	0%
Nonres Alien	0	0%	0	0%
White	8	53%	20	91%

Highest Degree of FT Instructional Faculty



UG Student-Faculty Ratio<sup>^</sup>: 12:1

\* Non-instructional faculty or staff teaching as adjuncts

\*\* Administrative faculty who teach PT are also included in the "Oth" count above

<sup>^</sup> As defined by the Common Data Set

Data provided by Human Resources (all except Emeritus) & the Provost's Office (Emeritus)

Table contains faculty from all sites

## Facilities & Student Housing

Structures Owned/Rented	# Flrs	Sq Ft	Primary Functions	
<b>NYC Campus</b>				
2 Washington Street	7	105,354	Offices, Classrooms, Library	
<b>Rockland Campus (South Nyack)</b>				
		<b>435,314</b>	<b>Acres: 86</b>	
Air Structure	1	27,600	Gymnasium	
Bailey Library	2	21,409	Library, Offices, Labs	
Bell Tower House	2	2,375	Offices	
Berachah	2	3,220	Staff Housing	
Bethel	2	2,155	Staff Housing	
Bethesda	2	3,795	Staff Housing	
Betty Knopp House	3	6,000	Offices	
Betty Olsen House	2	2,640	Student Center	
Boon Campus Center	4	40,093	Dining, Classrooms, Offices, P.O., Bookstore, Nursing	
Bowman Gym	2	16,007	Gymnasium & Athletic Offices	
Bradley Property House	2	3,427	President's Residence	
Brewer	2	2,496	Staff Housing	
Driscoll Cottage	3	5,763	Int'l Worker-In-Residence (IWIR) Housing, Staff Housing	
Duplex	1.5	3,978	Staff Housing	
Gables	2.5	2,195	Staff Housing	
Griswold Cottage	2	4,280	Staff Housing	
Lookout	2	2,179	Offices	
Maintenance Building	1	4,049	Offices, Shop & Garage	
Music Education Building	2	1,799	Classrooms, Offices	
Oakwood Apartments	1	900	Staff Housing	
Pardington Annex	2	1,750	Practice Rooms	
Pardington Hall	5	16,744	Auditorium, Classrooms, Offices	
Roseberry	2	5,916	Staff Offices	
Sunnyside	2	1,667	Staff Housing	
Shuman Hall	3	15,896	Offices, Conference Rooms	
Sky Island Lodge	2	6,785	Classrooms, Offices	
<b>Undergraduate Housing</b>				
	<b>Capacity</b>			
Bethany Hall	21	2.5	5,525	Student Housing
Christie Hall	193	5	42,267	Student Housing, Offices
Dunbar Hall	64	2	10,999	Student Housing
Harmony Hall	33	3	5,876	Student Housing
Moseley Hall	210	4	47,552	Student Housing, Classrooms, Offices
Simpson Hall	203	5	44,652	Student Housing, Classrooms, Offices
<b>Graduate Housing</b>				
	<b>Units</b>			
Barney Hall	9	3	12,384	Student Housing
Hillside Terrace #8 & 10	13	3	13,488	Student Housing
Hillside Terrace #12	10	3	9,744	Student Housing
Jaffray Hall	32	3	27,002	Student Housing
Shepherd Hall	9	3	10,707	Student Housing
<b>Rockland Campus (Upper Nyack)</b>				
		<b>53,369</b>	<b>Acres: 39</b>	
ATS Main Building	3	53,369	Offices, Auditorium, Classrooms, Library	
<b>GRAND TOTAL</b>		<b>594,037</b>		

Sources: Facilities, Auxiliary & Conference Services

## Tuition & Fee Schedule (annual)

### Semester-Based Programs

	TRAD UG NYC	TRAD UG Rockland	ATS/ MAJCO	AGSC	Grad Ed	MSW
<b>Regular Tuition</b>						
UG: 12-18 credits	25,000	25,000				
UG: Less than 12 credits ( <i>per credit</i> )	1,040	1,040				
UG: More than 18 credits ( <i>per credit</i> )	620	620				
Graduate ( <i>per credit</i> )			585	800	725	800
<b>Other Fees</b>						
Health		150				
Technology	500	500	500	500	500	500
<b>Audit Tuition</b>						
Less than 12 credits ( <i>per credit</i> )	100	100	100	100	100	100
<b>Estimated Total Tuition &amp; Fees</b>						
	25,500	25,650				
(based on annual credit load required for 100% normal time-to-completion in degree)	24-36	24-36				

<b>Private Music Lessons:</b> Piano, organ, voice, instrumental						
(per credit or 1/2 hr. of instruction)	400	400				
<b>Miscellaneous Fees (per semester)</b>						
Orientation Fee ( <i>new UG students, fall sem only</i> )	100	100				
Motor Vehicle Registration:						
Campus Resident		100	100	100	100	100
Commuter		50	50	50	50	50
Nursing Program Fee		1000				

<b>Resident Fees</b> (includes 21-meal plan for UG)						
Undergraduate						
Standard double room		10,000				
Other housing/meal plan options		9,800 - 11,000				
Graduate Housing ( <i>per month</i> ):						
1BR					1250	
2BR					1450	
3BR					1650	

### Cohort-Based Programs

	OM	MSOL	MBA	DMin
Number of Credits	36	33	42	36
Cost per Credit	675	725	800	585
Number of Terms	3	3	4	6
Fees (per Term)	250	250	250	150
Dissertation Project Fee				1,000
Estimated Total Program Cost	25,050	24,675	34,600	22,960